

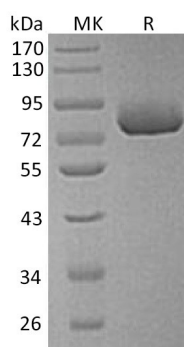
**Product Name: Recombinant Human XPNPEP2 (C-6His)**  
**Catalog #: PHH0057**



## Summary

<b>Name</b>	Aminopeptidase P2/XPNPEP2
<b>Purity</b>	Greater than 95% as determined by reducing SDS-PAGE
<b>Endotoxin level</b>	<1 EU/μg as determined by LAL test.
<b>Construction</b>	Recombinant Human Xaa-Pro Aminopeptidase 2 is produced by our Mammalian expression system and the target gene encoding His22-Ala650 is expressed with a 6His tag at the C-terminus.
<b>Accession #</b>	O43895
<b>Host</b>	Human Cells
<b>Species</b>	Human
<b>Predicted Molecular Mass</b>	71.64 KDa
<b>Formulation</b>	Supplied as a 0.2 μm filtered solution of 20mM Tris-HCl, 150mM NaCl, pH 8.0.
<b>Shipping</b>	The product is shipped on dry ice/polar packs. Upon receipt, store it immediately at the temperature listed below.
<b>Stability&amp;Storage</b>	Store at ≤-70°C, stable for 6 months after receipt. Store at ≤-70°C, stable for 3 months under sterile conditions after opening. Please minimize freeze-thaw cycles.
<b>Reconstitution</b>	

## SDS-PAGE image



## Background

<b>Alternative Names</b>	Xaa-Pro Aminopeptidase 2; Aminoacylproline Aminopeptidase; Membrane-Bound Aminopeptidase P; Membrane-Bound APP; Membrane-Bound AmP; mAmP; X-Pro Aminopeptidase 2; XPNPEP2
--------------------------	---

**Product Name: Recombinant Human XPNPEP2 (C-6His)**  
**Catalog #: PHH0057**



---

**Background**

Xaa-Pro aminopeptidase 2 (XPNPEP2) belongs to the peptidase M24B family of metalloproteases. Human XPNPEP2 is widely expressed in various tissues, such as kidney, lung, heart, placenta, liver, small intestine and colon. However, it doesn't express in brain, skeletal muscle, pancreas, spleen, thymus, prostate, testis and ovary. XPNPEP2 is a Homotrimer which binds 2 manganese ions per subunit. The metalloprotease XPNPEP2 may play a role in the inflammatory process and other reactions produced in response to injury or infection and the metabolism of the vasodilator bradykinin.

**Note**

For Research Use Only , Not for Diagnostic Use.