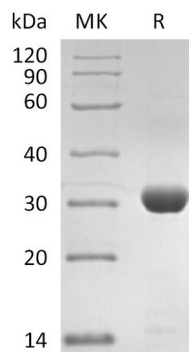


Product Name: Recombinant SARS-CoV-2 3C-like Proteinase (C-6His)
Catalog #: PEV2435

Summary

Name	3CLpro/3C-like Proteinase
Purity	Greater than 95% as determined by reducing SDS-PAGE
Endotoxin level	<1 EU/μg as determined by LAL test.
Construction	Recombinant SARS-CoV-2 3C-like Proteinase is produced by our E.coli expression system and the target gene encoding Ser3264-Gln3569 is expressed.
Accession #	P0DTC1
Host	E.coli
Species	SARS-CoV-2
Predicted Molecular Mass	33.8 kDa
Formulation	Supplied as a 0.2 μm filtered solution of 50mM Tris-HCl, 1mM EDTA, pH7.3.
Shipping	The product is shipped on dry ice/polar packs. Upon receipt, store it immediately at the temperature listed below.
Stability&Storage	Store at ≤-70°C, stable for 6 months after receipt. Store at ≤-70°C, stable for 3 months under sterile conditions after opening. Please minimize freeze-thaw cycles.
Reconstitution	

SDS-PAGE image



Background

Alternative Names 3C-like Proteinase; M Proteinase; 3CL Proteinase

Background The viral main proteinase (M pro , also called 3CL pro), which controls the activities



Product Name: Recombinant SARS-CoV-2 3C-like Proteinase (C-6H)
Catalog #: PEV2435

of the coronavirus replication complex. It functions as a cysteine protease engaging in the proteolytic cleavage of the viral precursor polyprotein to a series of functional proteins required for coronavirus replication and is considered as an appealing target for designing anti-SARS agents.

Note

For Research Use Only , Not for Diagnostic Use.