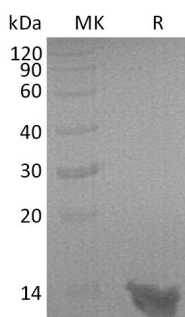


Summary

Name	S100A8/Mrp8/Protein S100-A8
Purity	Greater than 95% as determined by reducing SDS-PAGE
Endotoxin level	<1 EU/μg as determined by LAL test.
Construction	Recombinant Rat S100 Calcium Binding Protein A8 is produced by our E.coli expression system and the target gene encoding Met1-Glu89 is expressed with a 6His tag at the C-terminus.
Accession #	P50115
Host	E.coli
Species	Rat
Predicted Molecular Mass	11.3 KDa
Formulation	Lyophilized from a 0.2 μm filtered solution of 20mM Tris-HCl, pH 8.0.
Shipping	The product is shipped at ambient temperature. Upon receipt, store it immediately at the temperature listed below.
Stability&Storage	Store at ≤-70°C, stable for 6 months after receipt. Store at ≤-70°C, stable for 3 months under sterile conditions after opening. Please minimize freeze-thaw cycles.
Reconstitution	Always centrifuge tubes before opening. Do not mix by vortex or pipetting. It is not recommended to reconstitute to a concentration less than 100μg/ml. Dissolve the lyophilized protein in distilled water. Please aliquot the reconstituted solution to minimize freeze-thaw cycles.

SDS-PAGE image



Background

Product Name: Recombinant Rat S100A8 (C-6His)
Catalog #: PER1179



Alternative Names

Protein S100-A8; Calgranulin-A; Chemotactic cytokine CP-10; Leukocyte L1 complex light chain; Migration inhibitory factor-related protein 8; MRP-8; Pro-inflammatory S100 cytokine; S100 calcium-binding protein A8; S100a8; Caga; Mrp8

Background

Protein S100-A8(Mrp8) contains 2 EF-hand domains and belongs to the S-100 family. Mrp8 binds two calcium ions per molecule with an affinity similar to that of the S-100 proteins. S100 proteins are localized in the cytoplasm and/or nucleus of a wide range of cells, and involved in the regulation of a number of cellular processes such as cell cycle progression and differentiation. S100 genes include at least 13 members which are located as a cluster on chromosome 1q21. It may function in the inhibition of casein kinase and as a cytokine. Altered expression of this protein is associated with the disease cystic fibrosis.

Note

For Research Use Only , Not for Diagnostic Use.