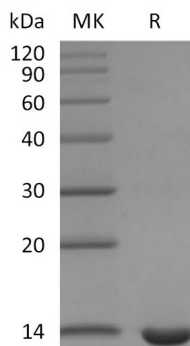


Summary

Name	Leptin
Purity	Greater than 95% as determined by reducing SDS-PAGE
Endotoxin level	<1 EU/μg as determined by LAL test.
Construction	Recombinant Mouse Leptin is produced by our E.coli expression system and the target gene encoding Val22-Cys167 is expressed.
Accession #	Q544U0
Host	E.coli
Species	Mouse
Predicted Molecular Mass	16.1 KDa
Formulation	Lyophilized from a 0.2 μm filtered solution of 20mM PB, 300mM NaCl, pH7.5.
Shipping	The product is shipped at ambient temperature. Upon receipt, store it immediately at the temperature listed below.
Stability&Storage	Lyophilized protein should be stored at ≤ -20°C, stable for one year after receipt. Reconstituted protein solution can be stored at 2-8°C for 2-7 days. Aliquots of reconstituted samples are stable at ≤ -20°C for 3 months.
Reconstitution	Always centrifuge tubes before opening. Do not mix by vortex or pipetting. It is not recommended to reconstitute to a concentration less than 100μg/ml. Dissolve the lyophilized protein in distilled water. Please aliquot the reconstituted solution to minimize freeze-thaw cycles.

SDS-PAGE image



Background

Product Name: Recombinant Mouse Leptin
Catalog #: PEM2203

Alternative Names

Leptin; Obese Protein; Obesity Factor; LEP; OB; OBS

Background

Leptin is a hormone secreted from white adipocytes and plays important role in the regulation of food intake and energy balance. Leptin functions via signaling pathways involving OB-R in hypothalamus. Animal models have revealed the influence of Leptin in reducing body weight and regulating blood glucose level. When mutations are introduced in obese gene, mice with impaired function of leptin are massively obese and in high risk of diabetes. Leptin deficiency reduces metabolic rate. Leptin deficient mice are less active and with lower body temperature than normal animals. Human Leptin shares approximately 84% sequence identity with the mouse protein. Human Leptin consists of 167 amino acid residue including a 21 amino acid residue signal sequence and 146 amino acid residue mature protein sequence.

Note

For Research Use Only , Not for Diagnostic Use.