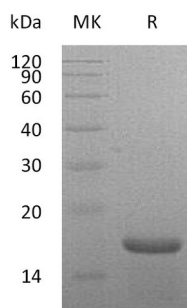


Summary

Name	IL-21/Interleukin-21/IL21
Purity	Greater than 95% as determined by reducing SDS-PAGE
Endotoxin level	<1 EU/μg as determined by LAL test.
Construction	Recombinant Mouse Interleukin-21 is produced by our E.coli expression system and the target gene encoding Pro25-Ser146 is expressed with a 6His tag at the N-terminus.
Accession #	Q9ES17
Host	E.coli
Species	Mouse
Predicted Molecular Mass	16.5 KDa
Formulation	Lyophilized from a 0.2 μm filtered solution of 20mM Histidine-HCl, 6% Sucrose, 2% Glycine, 50mM NaCl, 0.05% Tween 80, pH 6.5.
Shipping	The product is shipped at ambient temperature. Upon receipt, store it immediately at the temperature listed below.
Stability&Storage	Lyophilized protein should be stored at ≤ -20°C, stable for one year after receipt. Reconstituted protein solution can be stored at 2-8°C for 2-7 days. Aliquots of reconstituted samples are stable at ≤ -20°C for 3 months.
Reconstitution	Always centrifuge tubes before opening. Do not mix by vortex or pipetting. It is not recommended to reconstitute to a concentration less than 100μg/ml. Dissolve the lyophilized protein in distilled water. Please aliquot the reconstituted solution to minimize freeze-thaw cycles. Always centrifuge tubes before opening. Do not mix by vortex or pipetting. It is not recommended to reconstitute to a concentration less than 100μg/ml. Dissolve the lyophilized protein in distilled water. Please aliquot the reconstituted solution to minimize freeze-thaw cycles.

SDS-PAGE image



Background

Product Name: Recombinant Mouse IL-21 (N-6His)
Catalog #: PEM0996



Alternative Names

Interleukin-21;IL-21;IL21;IL21

Background

Interleukin-21(IL-21) is an approximately 14 kDa cytokine which belongs to the IL-15/IL-21 family. Mature mouse IL-21 shares 66%,59%, 58%, and 88% aa sequence identity with mature canine, human, rabbit, and rat IL-21, respectively. IL-21 is produced by activated T follicular helper cells (Tfh), Th17 cells, and NKT cells. It exerts its biological effects through a heterodimeric receptor complex (IL-21 specific IL-21 R). IL-21 is a cytokine that has potent regulatory effects on cells of the immune system, including natural killer (NK) cells and cytotoxic T cells that can destroy virally infected or cancerous cells. This cytokine induces cell division/proliferation in its target cells. It is required for the migration of dendritic cells to draining lymph nodes .It co-stimulates the activation, proliferation, and survival of CD8+ T cells and NKT cells and promotes Th17 cell polarization. It blocks the generation of regulatory T cells and their suppressive effects on CD4+ T cells.

Note

For Research Use Only , Not for Diagnostic Use.