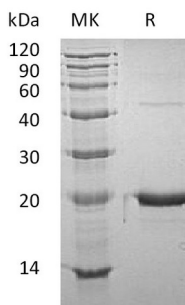


Summary

Name	Growth Hormone/Gh/GH
Purity	Greater than 95% as determined by reducing SDS-PAGE
Endotoxin level	<1 EU/ μ g as determined by LAL test.
Construction	Recombinant Mouse Growth Hormone is produced by our E.coli expression system and the target gene encoding Phe27-Phe216 is expressed.
Accession #	P06880
Host	E.coli
Species	Mouse
Predicted Molecular Mass	22 KDa
Formulation	Lyophilized from a 0.2 μ m filtered solution of 20mM HEPES, 4% Sucrose, 4% Mannitol, 0.02% Tween 80, pH 8.0.
Shipping	The product is shipped at ambient temperature. Upon receipt, store it immediately at the temperature listed below.
Stability&Storage	Store at \leq -70°C, stable for 6 months after receipt. Store at \leq -70°C, stable for 3 months under sterile conditions after opening. Please minimize freeze-thaw cycles.
Reconstitution	Always centrifuge tubes before opening. Do not mix by vortex or pipetting. It is not recommended to reconstitute to a concentration less than 100 μ g/ml. Dissolve the lyophilized protein in distilled water. Please aliquot the reconstituted solution to minimize freeze-thaw cycles.

SDS-PAGE image



Background

Product Name: Recombinant Mouse GH
Catalog #: PEM0764

Alternative Names

Somatotropin; Growth Hormone; Gh1; Gh

Background

Somatotropin(GH) is a member of the somatotropin/prolactin family of hormones which play an important role in growth control. Its major role in stimulating body growth is to stimulate the liver and other tissues to secrete IGF-1. GH stimulates both the differentiation and proliferation of myoblasts. It also stimulates amino acid uptake and protein synthesis in muscle and other tissues.

Note

For Research Use Only , Not for Diagnostic Use.