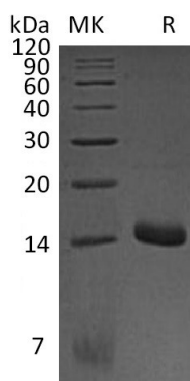


Summary

Name	CCL3/MIP-1 alpha/MIP-1a/C-C Motif Chemokine 3
Purity	Greater than 95% as determined by reducing SDS-PAGE
Endotoxin level	<1 EU/ μ g as determined by LAL test.
Construction	Recombinant Mouse C-C Motif Chemokine 3 is produced by our E.coli expression system and the target gene encoding Ala24-Ala92 is expressed with a 6His tag at the N-terminus.
Accession #	P10855
Host	E.coli
Species	Mouse
Predicted Molecular Mass	10.8 KDa
Formulation	Lyophilized from a 0.2 μ m filtered solution of 20mM Tris-HCl, 150mM NaCl, 5%Trehalose, 1mM EDTA, pH 8.0.
Shipping	The product is shipped at ambient temperature. Upon receipt, store it immediately at the temperature listed below.
Stability&Storage	Lyophilized protein should be stored at $\leq -20^{\circ}\text{C}$, stable for one year after receipt. Reconstituted protein solution can be stored at 2-8 $^{\circ}\text{C}$ for 2-7 days. Aliquots of reconstituted samples are stable at $\leq -20^{\circ}\text{C}$ for 3 months.
Reconstitution	Always centrifuge tubes before opening. Do not mix by vortex or pipetting. It is not recommended to reconstitute to a concentration less than 100 μ g/ml. Dissolve the lyophilized protein in distilled water. Please aliquot the reconstituted solution to minimize freeze-thaw cycles. Always centrifuge tubes before opening. Do not mix by vortex or pipetting. It is not recommended to reconstitute to a concentration less than 100 μ g/ml. Dissolve the lyophilized protein in distilled water. Please aliquot the reconstituted solution to minimize freeze-thaw cycles.

SDS-PAGE image



Product Name: Recombinant Mouse CCL3 (N-6His)
Catalog #: PEM0255



Background

Alternative Names

C-C motif chemokine 3;Heparin-binding chemotaxis protein; Macrophage inflammatory protein 1-alpha;MIP1-a; chemokine (C-C motif) ligand 3; LD78a; LD78 alpha; MIP-1 alpha;Scya3

Background

C-C Motif Chemokine 3 (MIP-1 alpha,CCL3) is a member of the beta or CC subfamily of chemokines and is closely related to CCL4/MIP-1 beta. CCL3 expression can be induced in a variety of hematopoietic cells, fibroblasts, smooth muscle cells, and epithelial cells. Mature mouse CCL3 shares 73%, 91%, and 82% amino acid sequence identity with human, rat, and cotton rat CCL3, respectively. CCL3 exerts its biological functions through interactions with CCR1, CCR3, and CCR5. It is cleared from the extracellular space by internalization via the decoy chemokine receptor D6. CCL3 promotes the chemoattraction, adhesion to activated vascular endothelium, and cellular activation of many hematopoietic cell types including activated T cells, NK cells, neutrophils, monocytes, immature dendritic cells, and eosinophils. CCL3 is also known as stem cell inhibitor (SCI) and can inhibit the proliferation of hematopoietic progenitor cells. CCL3 bioactivity contributes to tumor metastasis and the inflammatory components of viral infection, rheumatoid arthritis, and hepatitis, although it also can suppress the replication of HIV.

Note

For Research Use Only , Not for Diagnostic Use.