

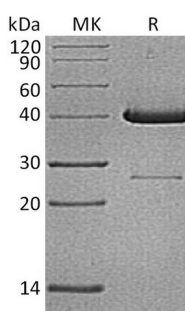
Product Name: Recombinant Human UBE2D1 (N-GST)
Catalog #: PEH1781



Summary

Name	Ubiquitin-conjugating enzyme E2 D1/UBE2D1/UBCH5
Purity	Greater than 95% as determined by reducing SDS-PAGE
Endotoxin level	<1 EU/μg as determined by LAL test.
Construction	Recombinant Human Ubiquitin-conjugating Enzyme E2 D1 is produced by our E.coli expression system and the target gene encoding Met1-Met147 is expressed with a GST tag at the N-terminus.
Accession #	P51668
Host	E.coli
Species	Human
Predicted Molecular Mass	42.9 KDa
Formulation	Supplied as a 0.2 μm filtered solution of 50mM HEPES, 150mM NaCl, 2mM DTT, 10% Glycerol, pH 7.5.
Shipping	The product is shipped on dry ice/polar packs. Upon receipt, store it immediately at the temperature listed below.
Stability&Storage	Store at ≤-70°C, stable for 6 months after receipt. Store at ≤-70°C, stable for 3 months under sterile conditions after opening. Please minimize freeze-thaw cycles.
Reconstitution	

SDS-PAGE image



Background

Alternative Names	Ubiquitin-conjugating enzyme E2 D1; Stimulator of Fe transport; SFT; UBC4/5 homolog; UbcH5; Ubiquitin carrier protein D1; Ubiquitin-conjugating enzyme E2(17)KB 1; Ubiquitin-conjugating enzyme E2-17 kDa 1; Ubiquitin-protein ligase D1; SFT; UBC5A; UBCH5; UBCH5A
--------------------------	---

Product Name: Recombinant Human UBE2D1 (N-GST)
Catalog #: PEH1781



Background

Ubiquitin-conjugating enzyme E2 D1 (UBE2D1) belongs to the ubiquitin-conjugating enzyme family. Ubiquitination involves at least three classes of enzymes: ubiquitin-activating enzymes, or E1s, ubiquitin-conjugating enzymes, or E2s, and ubiquitin-protein ligases, or E3s. This enzyme is closely related to a stimulator of iron transport (SFT), and is up-regulated in hereditary hemochromatosis. It also functions in the ubiquitination of the tumor-suppressor protein p53 and the hypoxia-inducible transcription factor HIF1alpha by interacting with the E1 ubiquitin-activating enzyme and the E3 ubiquitin-protein ligases.

Note

For Research Use Only , Not for Diagnostic Use.