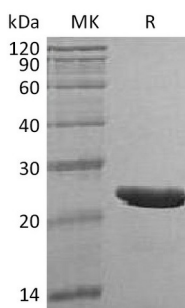


## Summary

<b>Name</b>	Thymopoietin
<b>Purity</b>	Greater than 95% as determined by reducing SDS-PAGE
<b>Endotoxin level</b>	<1 EU/μg as determined by LAL test.
<b>Construction</b>	Recombinant Human Thymopoietin is produced by our E.coli expression system and the target gene encoding Met1-Glu187 is expressed with a 6His tag at the C-terminus.
<b>Accession #</b>	P42167
<b>Host</b>	E.coli
<b>Species</b>	Human
<b>Predicted Molecular Mass</b>	21.6 KDa
<b>Formulation</b>	Lyophilized from a 0.2 μm filtered solution of PBS, pH 7.4.
<b>Shipping</b>	The product is shipped at ambient temperature. Upon receipt, store it immediately at the temperature listed below.
<b>Stability&amp;Storage</b>	Store at ≤-70°C, stable for 6 months after receipt. Store at ≤-70°C, stable for 3 months under sterile conditions after opening. Please minimize freeze-thaw cycles.
<b>Reconstitution</b>	Always centrifuge tubes before opening. Do not mix by vortex or pipetting. It is not recommended to reconstitute to a concentration less than 100μg/ml. Dissolve the lyophilized protein in distilled water. Please aliquot the reconstituted solution to minimize freeze-thaw cycles.

## SDS-PAGE image



## Background

**Product Name: Recombinant Human TMPO (C-6His)**  
**Catalog #: PEH1643**



---

**Alternative Names**

Lamina-Associated Polypeptide 2 Isoforms Beta/Gamma; Thymopoietin Isoforms Beta/Gamma; TP Beta/Gamma; Thymopoietin-Related Peptide Isoforms Beta/Gamma; TPRP Isoforms Beta/Gamma; Thymopoietin; TP; Splenin; Thymopentin; TP5; TMPO; LAP2

**Background**

Thymopentin is a member of the LEM family. Thymopentin is expressed in many tissues, highly in the adult thymus and fetal liver. The N-terminal contains two structurally independent domains, LEM domain and LEM-like domain. The C-terminal domain forms a four-stranded coiled coil. Thymopentin may be involved in the structural organization of the nucleus and in the post-mitotic nuclear assembly. It is associated with T-cell development and function. Meantime, Thymopentin plays an important role, together with LMNA, in the nuclear anchorage of RB1. Thymopoietin is participated in the induction of CD90 in the thymus.

**Note**

For Research Use Only , Not for Diagnostic Use.