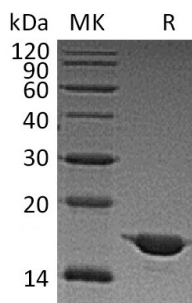


Summary

Name	SNCA/Alpha-synuclein
Purity	Greater than 95% as determined by reducing SDS-PAGE
Endotoxin level	<0.001 EU/μg as determined by LAL test.
Construction	Recombinant Human Alpha-Synuclein is produced by our E.coli expression system and the target gene encoding Met1-Ala140 is expressed.
Accession #	P37840
Host	E.coli
Species	Human
Predicted Molecular Mass	14.46 KDa
Formulation	Lyophilized from a 0.2 μm filtered solution of 20 mM Tris-HCl, 15% Maltose, 0.1% Tween 80, 10 mM Methionine, pH 8.0.
Shipping	The product is shipped at ambient temperature. Upon receipt, store it immediately at the temperature listed below.
Stability&Storage	Store at ≤-70°C, stable for 6 months after receipt. Store at ≤-70°C, stable for 3 months under sterile conditions after opening. Please minimize freeze-thaw cycles.
Reconstitution	Always centrifuge tubes before opening. Do not mix by vortex or pipetting. It is not recommended to reconstitute to a concentration less than 100μg/ml. Dissolve the lyophilized protein in distilled water. Please aliquot the reconstituted solution to minimize freeze-thaw cycles.

SDS-PAGE image



Background

Product Name: Recombinant Human SNCA
Catalog #: PEH1544

Alternative Names

Alpha-Synuclein; Non-A Beta Component of AD Amyloid; Non-A4 Component of Amyloid Precursor; NACP; SNCA; NACP; PARK1

Background

Alpha-Synuclein (SNCA) is a member of the Synuclein family. SNCA is expressed principally in brain but also expressed in low concentrations in all tissues except liver. SNCA interacts with UCHL1, Phospholipase D and histones. SNCA can include beta- and gamma-synuclein. In addition, SNCA is an important regulatory component of vesicular transport in neuronal cells. It has been suggested that SNCA is related to the pathogenesis of Parkinsons Disease and neurodegenerative disorders. Defects in SNCA will lead to Dementia Lewy Body (DLB).

Note

For Research Use Only , Not for Diagnostic Use.