

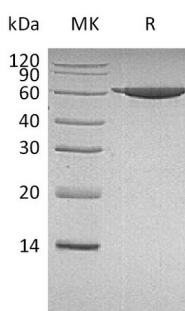
Product Name: Recombinant Human PKM2 (N-6His)
Catalog #: PEH1408



Summary

Name	Pyruvate kinase PKM/PKM2
Purity	Greater than 95% as determined by reducing SDS-PAGE
Endotoxin level	<1 EU/μg as determined by LAL test.
Construction	Recombinant Human Pyruvate Kinase Isoform M2 is produced by our E.coli expression system and the target gene encoding Ser2-Pro531 is expressed with a 6His tag at the N-terminus.
Accession #	P14618
Host	E.coli
Species	Human
Predicted Molecular Mass	60.1 KDa
Formulation	Supplied as a 0.2 μm filtered solution of 20mM Tris-HCl, 50mM NaCl, 0.05% Brij-35, 1mM DTT, pH7.5.
Shipping	The product is shipped on dry ice/polar packs. Upon receipt, store it immediately at the temperature listed below.
Stability&Storage	Store at ≤-70°C, stable for 6 months after receipt. Store at ≤-70°C, stable for 3 months under sterile conditions after opening. Please minimize freeze-thaw cycles.
Reconstitution	

SDS-PAGE image



Background

Alternative Names Pyruvate kinase PKM; CTHBP; OIP-3; THBP1

Background Pyruvate kinase isoform M2 (PKM2) is a member of the pyruvate kinase (PK) family, a pivotal glycolytic enzyme that is consistently changed during tumorigenesis.

Product Name: Recombinant Human PKM2 (N-6His)
Catalog #: PEH1408



PKM2 is expressed in some differentiated tissues, such as lung, fat tissue, retina, and pancreatic islets. As the rate-controlling enzyme in glycolysis, PKM2, has also been found to be expressed in embryonic, proliferating, and tumor cells, and it has been considered to be crucial for the metabolism and growth of tumor cells. Recent studies have shown that PKM2 promotes cell proliferation and suppresses cell apoptosis in various tumors. In addition, it has been reported that the PKM2 knockdown affects the Akt and ERK protein kinases.

Note

For Research Use Only , Not for Diagnostic Use.