

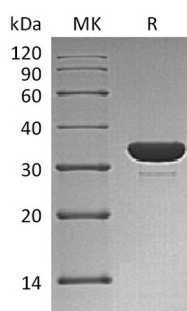
Product Name: Recombinant Human PTP1C (C-6His)
Catalog #: PEH1402



Summary

Name	PTP1C/PTPN6
Purity	Greater than 95% as determined by reducing SDS-PAGE
Endotoxin level	<1 EU/μg as determined by LAL test.
Construction	Recombinant Human Protein-Tyrosine Phosphatase 1C is produced by our E.coli expression system and the target gene encoding Lys243-Ile541 is expressed with a 6His tag at the C-terminus.
Accession #	AAH02523.1
Host	E.coli
Species	Human
Predicted Molecular Mass	35.38 KDa
Formulation	Supplied as a 0.2 μm filtered solution of 25mM Tris-HCl, 500mM NaCl, 2mM 2-Mercaptoethanol, 1mM EDTA, 1mM DTT, 20% Glycerol, pH7.5.
Shipping	The product is shipped on dry ice/polar packs. Upon receipt, store it immediately at the temperature listed below.
Stability&Storage	Store at ≤-70°C, stable for 6 months after receipt. Store at ≤-70°C, stable for 3 months under sterile conditions after opening. Please minimize freeze-thaw cycles.
Reconstitution	

SDS-PAGE image



Background

Alternative Names	Tyrosine-Protein Phosphatase Non-Receptor Type 6; Hematopoietic Cell Protein-Tyrosine Phosphatase; Protein-Tyrosine Phosphatase 1C; PTP-1C; Protein-Tyrosine Phosphatase SHP-1; SH-PTP1; PTPN6; HCP; PTP1C
Background	Protein-Tyrosine Phosphatase 1C (PTP1C) belongs to the protein-tyrosine

Product Name: Recombinant Human PTP1C (C-6His)
Catalog #: PEH1402



phosphatase family, which is known to be signaling molecules that regulate a variety of cellular processes including cell growth, differentiation, mitotic cycle, and oncogenic transformation. PTP1C is highly expressed in leukocyte cell type. It contains two SH2 domains and one tyrosine-protein phosphatase domain. The SH2 regions may interact with other cellular components to modulate its own phosphatase activity against interacting substrates. In addition, PTP1C also modulates signaling by tyrosine phosphorylated cell surface receptors.

Note

For Research Use Only , Not for Diagnostic Use.