

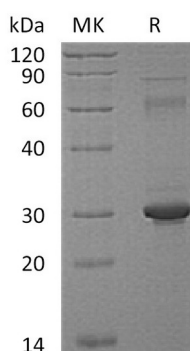
Product Name: Recombinant Human PP1MG (C-6His)
Catalog #: PEH1389



Summary

Name	Protein phosphatase 1G/PP1MG
Purity	Greater than 95% as determined by reducing SDS-PAGE
Endotoxin level	<1 EU/μg as determined by LAL test.
Construction	Recombinant Human Protein Phosphatase 1G is produced by our E.coli expression system and the target gene encoding Met317-Asp546 is expressed with a 6His tag at the C-terminus.
Accession #	O15355
Host	E.coli
Species	Human
Predicted Molecular Mass	26.15 KDa
Formulation	Supplied as a 0.2 μm filtered solution of 25mM Tris-HCl, 1mM DTT, 1mM EDTA, 2mM β-ME, 20% Glycerol, pH 7.5.
Shipping	The product is shipped on dry ice/polar packs. Upon receipt, store it immediately at the temperature listed below.
Stability&Storage	Store at ≤-70°C, stable for 6 months after receipt. Store at ≤-70°C, stable for 3 months under sterile conditions after opening. Please minimize freeze-thaw cycles.
Reconstitution	

SDS-PAGE image



Background

Alternative Names	Protein Phosphatase 1G; Protein Phosphatase 1C; Protein Phosphatase 2C Isoform Gamma; PP2C-Gamma; Protein Phosphatase Magnesium-Dependent 1 Gamma; PPM1G; PPM1C
--------------------------	---

Product Name: Recombinant Human PP1MG (C-6His)
Catalog #: PEH1389



Background

Protein Phosphatase 1G (PP1MG) is a cytoplasmic protein that belongs to the PP2C family. PPM1G is widely expressed; it is abundant in testis, skeletal muscle, and heart. PPM1G is a negative regulator of cell stress response pathways. PPM1G is responsible for the dephosphorylation of Pre-mRNA splicing factors, an important factor for the formation of functional spliceosome. PPM1G also plays a role in regulating cell cycle progression.

Note

For Research Use Only , Not for Diagnostic Use.