

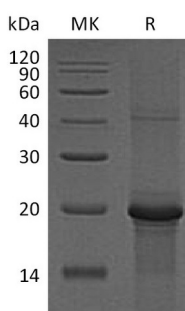
Product Name: Recombinant Human PKCE (C-6His)
Catalog #: PEH1387



Summary

Name	Protein kinase C epsilon type/PKCE
Purity	Greater than 95% as determined by reducing SDS-PAGE
Endotoxin level	<1 EU/μg as determined by LAL test.
Construction	Recombinant Human PKC Epsilon is produced by our E.coli expression system and the target gene encoding Gln580-Pro737 is expressed with a 6His tag at the C-terminus.
Accession #	Q02156
Host	E.coli
Species	Human
Predicted Molecular Mass	19.64 KDa
Formulation	Supplied as a 0.2 μm filtered solution of 20mM PB, 150mM NaCl, 1mM DTT, pH 7.4.
Shipping	The product is shipped on dry ice/polar packs. Upon receipt, store it immediately at the temperature listed below.
Stability&Storage	Store at ≤-70°C, stable for 6 months after receipt. Store at ≤-70°C, stable for 3 months under sterile conditions after opening. Please minimize freeze-thaw cycles.
Reconstitution	

SDS-PAGE image



Background

Alternative Names Protein Kinase C Epsilon Type; nPKC-Epsilon; PRKCE; PKCE

Background Protein Kinase C Epsilon type is a member of the serine- and threonine-specific protein kinase family that can be activated by calcium and the second messenger

Product Name: Recombinant Human PKCE (C-6His)
Catalog #: PEH1387



diacylglycerol. Protein Kinase C Epsilon contains these domains: one AGC-kinase C-terminal domain, one C2 domain, one protein kinase domain and two phorbol-ester/DAG-type zinc fingers. Protein Kinase C Epsilon phosphorylate a variety of protein targets and has been identified to participate in diverse cellular signaling pathways. It has many different cellular functions, such as neuron channel activation, apoptosis, cardioprotection from ischemia, heat shock response, as well as insulin exocytosis. Protein Kinase C Epsilon also serves as the receptor for phorbol esters, a class of tumor promoters.

Note

For Research Use Only , Not for Diagnostic Use.