

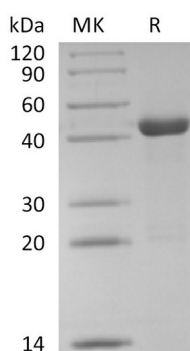
Product Name: Recombinant Human PPM1A (C-6His)
Catalog #: PEH1356



Summary

Name	PP2C alpha/PPM1A
Purity	Greater than 95% as determined by reducing SDS-PAGE
Endotoxin level	<1 EU/μg as determined by LAL test.
Construction	Recombinant Human Protein Phosphatase 1A is produced by our E.coli expression system and the target gene encoding Gly2-Trp382 is expressed with a 6His tag at the C-terminus.
Accession #	P35813
Host	E.coli
Species	Human
Predicted Molecular Mass	43.5 KDa
Formulation	Supplied as a 0.2 μm filtered solution of 20mM PB, 150mM NaCl, pH 7.4.
Shipping	The product is shipped on dry ice/polar packs. Upon receipt, store it immediately at the temperature listed below.
Stability&Storage	Store at ≤-70°C, stable for 6 months after receipt. Store at ≤-70°C, stable for 3 months under sterile conditions after opening. Please minimize freeze-thaw cycles.
Reconstitution	

SDS-PAGE image



Background

Alternative Names	Protein Phosphatase 1A; Protein Phosphatase 2C Isoform Alpha; PP2C-Alpha; Protein Phosphatase IA; PPM1A; PPPM1A
Background	Protein Phosphatase 1A (PPM1A) is a member of the PP2C family of Ser/Thr

Product Name: Recombinant Human PPM1A (C-6His)
Catalog #: PEH1356



protein phosphatases which are known to be negative regulators of cell stress response pathways. PPM1A has a broad specificity. PPM1A negatively regulates the activities of MAP kinases and MAP kinase kinases. Also, it negatively regulates TGF-beta signaling through dephosphorylating SMAD2 and SMAD3, resulting in their dissociation from SMAD4, nuclear export of the SMADs and termination of the TGF-beta-mediated signaling. In addition, PPM1A can dephosphorylate cyclin-dependent kinases, and thus may be involved in cell cycle control.

Note

For Research Use Only , Not for Diagnostic Use.