

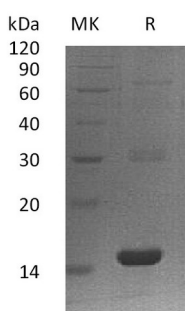
Product Name: Recombinant Human PLA2G16 (N-6His)
Catalog #: PEH1332



Summary

Name	PLA2G16/HRSL3
Purity	Greater than 95% as determined by reducing SDS-PAGE
Endotoxin level	<1 EU/μg as determined by LAL test.
Construction	Recombinant Human Phospholipase A2 Group XVI is produced by our E.coli expression system and the target gene encoding Asp12-Asp132 is expressed with a 6His tag at the N-terminus.
Accession #	P53816
Host	E.coli
Species	Human
Predicted Molecular Mass	14-17 KDa
Formulation	Supplied as a 0.2 μm filtered solution of 20mM Tris-HCl, 50mM NaCl, 1mM EDTA, pH8.0.
Shipping	The product is shipped on dry ice/polar packs. Upon receipt, store it immediately at the temperature listed below.
Stability&Storage	Store at ≤-70°C, stable for 6 months after receipt. Store at ≤-70°C, stable for 3 months under sterile conditions after opening. Please minimize freeze-thaw cycles.
Reconstitution	

SDS-PAGE image



Background

Alternative Names	Group XVI Phospholipase A1/A2; Adipose-Specific Phospholipase A2; AdPLA; H-Rev 107 Protein Homolog; HRAS-Like Suppressor 1; HRAS-Like Suppressor 3; HRSL3; HREV107-1; HREV107-3; Renal Carcinoma Antigen NY-REN-65; PLA2G16; HRASLS3; HREV107
--------------------------	---

Product Name: Recombinant Human PLA2G16 (N-6His)
Catalog #: PEH1332



Background

Group XVI Phospholipase A1/A2 (PLA2G16) belongs to the H-rev 107 family. PLA2G16 is expressed in a number of human tumors including ovarian carcinomas, lung carcinomas. PLA2G16 is involved in the regulation of differentiation and survival. PLA2G16 regulates adipocyte lipolysis and release of fatty acids through a G-protein coupled pathway involving prostaglandin and EP3. It has also been reported to play a crucial role in the development of obesity in mouse models.

Note

For Research Use Only , Not for Diagnostic Use.