

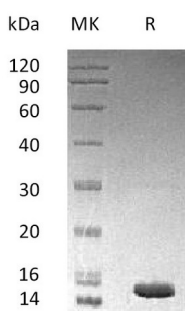
**Product Name: Recombinant Human Mp1 (N-6His)**  
**Catalog #: PEH1177**



## Summary

<b>Name</b>	Mp1/MAPKSP1
<b>Purity</b>	Greater than 95% as determined by reducing SDS-PAGE
<b>Endotoxin level</b>	<1 EU/μg as determined by LAL test.
<b>Construction</b>	Recombinant Human Mitogen-Activated Protein Kinase Scaffold Protein 1 is produced by our E.coli expression system and the target gene encoding Met1-Ser124 is expressed with a 6His tag at the N-terminus.
<b>Accession #</b>	Q9UHA4
<b>Host</b>	E.coli
<b>Species</b>	Human
<b>Predicted Molecular Mass</b>	15.78 KDa
<b>Formulation</b>	Supplied as a 0.2 μm filtered solution of 20mM Tris-HCl, 100mM NaCl, 5mM DTT, 30% Glycerol, pH 8.0.
<b>Shipping</b>	The product is shipped on dry ice/polar packs. Upon receipt, store it immediately at the temperature listed below.
<b>Stability&amp;Storage</b>	Store at ≤-70°C, stable for 6 months after receipt. Store at ≤-70°C, stable for 3 months under sterile conditions after opening. Please minimize freeze-thaw cycles.
<b>Reconstitution</b>	

## SDS-PAGE image



## Background

<b>Alternative Names</b>	Regulator Complex Protein LAMTOR3; Late Endosomal/Lysosomal Adaptor and MAPK and MTOR Activator 3; MEK-Binding Partner 1; Mp1; Mitogen-Activated Protein Kinase Kinase 1-Interacting Protein 1; Mitogen-Activated Protein Kinase Scaffold Protein 1; LAMTOR3; MAP2K1IP1; MAPKSP1
--------------------------	--

**Product Name: Recombinant Human Mp1 (N-6His)**  
**Catalog #: PEH1177**



---

**Background**

Mitogen-Activated Protein Kinase Scaffold Protein 1 (MAPKSP1) was identified as an interacting protein that belongs to the LAMTOR3 family. MAPKSP1 restricted to late endosomes by the mitogen-activated protein-binding protein-interacting protein, and binds specifically to MAP kinase kinase MAP2K1/MEK1, MAP kinase MAPK3/ERK1, and MAP kinase MAPK1/ERK2. MAPKSP1 interacts with MAP2K1/MEK1 and MAPK2 and enhances the activation of MAPK2, and thus is thought to function as an adaptor to enhance the efficiency of the MAP kinase cascade.

**Note**

For Research Use Only , Not for Diagnostic Use.