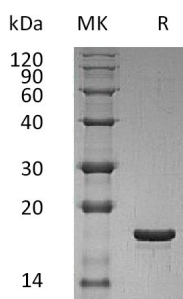


Summary

Name	LIF/Leukemia inhibitory factor
Purity	Greater than 95% as determined by reducing SDS-PAGE
Endotoxin level	<0.01 EU/ μ g as determined by LAL test.
Construction	Recombinant Human Leukemia Inhibitory Factor is produced by our E.coli expression system and the target gene encoding Ser23-Phe202 is expressed.
Accession #	P15018
Host	E.coli
Species	Human
Predicted Molecular Mass	19.7 KDa
Formulation	Lyophilized from a 0.2 μ m filtered solution of PBS, pH 7.4.
Shipping	The product is shipped at ambient temperature. Upon receipt, store it immediately at the temperature listed below.
Stability&Storage	Lyophilized protein should be stored at $\leq -20^{\circ}\text{C}$, stable for one year after receipt. Reconstituted protein solution can be stored at 2-8 $^{\circ}\text{C}$ for 2-7 days. Aliquots of reconstituted samples are stable at $\leq -20^{\circ}\text{C}$ for 3 months.
Reconstitution	Always centrifuge tubes before opening. Do not mix by vortex or pipetting. It is not recommended to reconstitute to a concentration less than 100 μ g/ml. Dissolve the lyophilized protein in distilled water. Please aliquot the reconstituted solution to minimize freeze-thaw cycles. Always centrifuge tubes before opening. Do not mix by vortex or pipetting. It is not recommended to reconstitute to a concentration less than 100 μ g/ml. Dissolve the lyophilized protein in distilled water. Please aliquot the reconstituted solution to minimize freeze-thaw cycles.

SDS-PAGE image



Background

Product Name: Recombinant Human LIF
Catalog #: PEH1083

Alternative Names

Leukemia Inhibitory Factor; LIF; Differentiation-Stimulating Factor; D Factor; Melanoma-Derived LPL Inhibitor; MLPLI; Emfilermin; LIF; HILDA

Background

Leukemia Inhibitory Factor (LIF) is a lymphoid factor that promotes long-term maintenance of embryonic stem cells by suppressing spontaneous differentiation. LIF has a number of other activities including cholinergic neuron differentiation, control of stem cell pluripotency, bone and fat metabolism, mitogenesis of certain factor dependent cell lines and promotion of megakaryocyte production in vivo. Human and murine mature LIF exhibit a 78% sequence identity at the amino acid level. Human LIF is equally active on human and mouse cells. Murine LIF is approximately 1000 fold less active on human cells than human LIF.

Note

For Research Use Only , Not for Diagnostic Use.