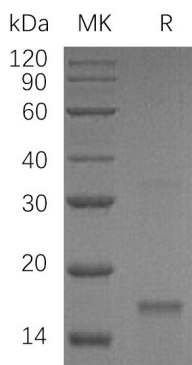


Summary

Name	Inhibin beta C chain/Activin beta-C chain/INHBC
Purity	Greater than 95% as determined by reducing SDS-PAGE
Endotoxin level	<1 EU/μg as determined by LAL test.
Construction	Recombinant Human Inhibin Beta C Chain is produced by our E.coli expression system and the target gene encoding Gly237-Ser352 is expressed with a 6His tag at the N-terminus.
Accession #	P55103
Host	E.coli
Species	Human
Predicted Molecular Mass	14.83 KDa
Formulation	Lyophilized from a 0.2 μm filtered solution of 4mM HCl, 1mM DTT.
Shipping	The product is shipped at ambient temperature. Upon receipt, store it immediately at the temperature listed below.
Stability&Storage	Store at ≤-70°C, stable for 6 months after receipt. Store at ≤-70°C, stable for 3 months under sterile conditions after opening. Please minimize freeze-thaw cycles.
Reconstitution	Always centrifuge tubes before opening. Do not mix by vortex or pipetting. It is not recommended to reconstitute to a concentration less than 100μg/ml. Dissolve the lyophilized protein in 4mM HCl. Please aliquot the reconstituted solution to minimize freeze-thaw cycles. Always centrifuge tubes before opening. Do not mix by vortex or pipetting. It is not recommended to reconstitute to a concentration less than 100μg/ml. Dissolve the lyophilized protein in 4mM HCl. Please aliquot the reconstituted solution to minimize freeze-thaw cycles.

SDS-PAGE image



Product Name: Recombinant Human INHBC (N-6His)
Catalog #: PEH0950



Background

Alternative Names Inhibin Beta C Chain; Activin Beta-C Chain; INHBC

Background Inhibins/activins are involved in regulating a number of diverse functions such as hypothalamic and pituitary hormone secretion, gonadal hormone secretion, germ cell development and maturation, erythroid differentiation, insulin secretion, nerve cell survival, embryonic axial development or bone growth, depending on their subunit composition. Inhibins appear to oppose the functions of activins, Inhibins and activins inhibit and activate, respectively, the secretion of follitropin by the pituitary gland.

Note

For Research Use Only , Not for Diagnostic Use.