

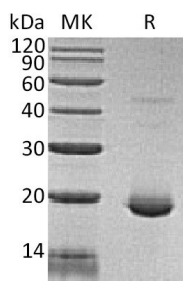
**Product Name: Recombinant Human IL-6**  
**Catalog #: PEH0933**



## Summary

<b>Name</b>	IL-6
<b>Purity</b>	Greater than 95% as determined by reducing SDS-PAGE
<b>Endotoxin level</b>	<0.01 EU/μg as determined by LAL test.
<b>Construction</b>	Recombinant Human Interleukin-6 is produced by our E.coli expression system and the target gene encoding Val30-Met212 is expressed.
<b>Accession #</b>	P05231
<b>Host</b>	E.coli
<b>Species</b>	Human
<b>Predicted Molecular Mass</b>	20.9 KDa
<b>Formulation</b>	Lyophilized from a 0.2 μm filtered solution of 20mM PB, 5% Sucrose, 4% Mannitol, 0.05% PS-80, pH7.4.
<b>Shipping</b>	The product is shipped at ambient temperature. Upon receipt, store it immediately at the temperature listed below.
<b>Stability&amp;Storage</b>	Store at ≤-70°C, stable for 6 months after receipt. Store at ≤-70°C, stable for 3 months under sterile conditions after opening. Please minimize freeze-thaw cycles.
<b>Reconstitution</b>	Always centrifuge tubes before opening. Do not mix by vortex or pipetting. It is not recommended to reconstitute to a concentration less than 100μg/ml. Dissolve the lyophilized protein in distilled water. Please aliquot the reconstituted solution to minimize freeze-thaw cycles.

## SDS-PAGE image



## Background

**Alternative Names** Interleukin-6; IL-6; B-Cell Stimulatory Factor 2; BSF-2; CTL Differentiation Factor;

**Product Name: Recombinant Human IL-6**  
**Catalog #: PEH0933**

---

**Background**

CDF; Hybridoma Growth Factor; Interferon Beta-2; IFN-Beta-2; IL6; IFNB2  
Cytokines of the IL6/GCSF/MGF family are glycoproteins of about 170 to 180 amino acid residues that contain four conserved cysteine residues involved in two disulfide bonds. They have a compact, globular fold (similar to other interleukins), stabilized by the 2 disulfide bonds. One half of the structure is dominated by a 4 alpha-helix bundle with a left-handed twist; the helices are anti-parallel, with 2 overhand connections, which fall into a 2-stranded anti-parallel beta-sheet. The fourth alpha helix is important to the biological activity of the molecule. Interleukin-6 (IL-6) is an important proinflammatory and immunoregulatory cytokine expressed by various cells. Interleukin-6 has been shown to inhibit the growth of early stage and to promote the proliferation of advanced stage melanoma cells in vitro.

**Note**

For Research Use Only , Not for Diagnostic Use.