

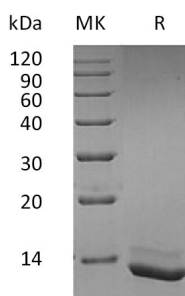
Product Name: Recombinant Human IL-15
Catalog #: PEH0870



Summary

Name	IL-15/Interleukin-15
Purity	Greater than 95% as determined by reducing SDS-PAGE
Endotoxin level	<0.01 EU/μg as determined by LAL test.
Construction	Recombinant Human Interleukin-15 is produced by our E.coli expression system and the target gene encoding Asn49-Ser162 is expressed.
Accession #	P40933
Host	E.coli
Species	Human
Predicted Molecular Mass	12.5 KDa
Formulation	Lyophilized from a 0.2 μm filtered solution of 20mM PB, 150mM NaCl, pH 7.0.
Shipping	The product is shipped at ambient temperature. Upon receipt, store it immediately at the temperature listed below.
Stability&Storage	Lyophilized protein should be stored at ≤ -20°C, stable for one year after receipt. Reconstituted protein solution can be stored at 2-8°C for 2-7 days. Aliquots of reconstituted samples are stable at ≤ -20°C for 3 months.
Reconstitution	Always centrifuge tubes before opening. Do not mix by vortex or pipetting. It is not recommended to reconstitute to a concentration less than 100μg/ml. Dissolve the lyophilized protein in distilled water. Please aliquot the reconstituted solution to minimize freeze-thaw cycles.

SDS-PAGE image



Background

Product Name: Recombinant Human IL-15
Catalog #: PEH0870

Alternative Names Interleukin-15; IL-15; IL15

Background Human Interleukin 15 (IL-15) is a cytokine that regulates T cell and natural killer cell activation and proliferation. IL-15 binds to the alpha subunit of the IL15 receptor (IL-15RA) with high affinity. IL-15 also binds to the beta and gamma chains of the IL-2 receptor, but not the alpha subunit of the IL2 receptor. IL-15 is structurally and functionally related to IL-2. Both cytokines share some subunits of receptors, allowing them to compete for and negatively regulate each others activity. The number of CD8+ memory T cells is controlled by a balance between IL-15 and IL-2. Despite their many overlapping functional properties, IL-2 and IL-15 are, in fact, quite distinct players in the immune system. IL-15 is constitutively expressed by a wide variety of cell types and tissues, including monocytes, macrophages and DCs. Mature Human IL-15 shares 70% amino acid sequence identity with Mouse and Rat IL-15.

Note

For Research Use Only , Not for Diagnostic Use.