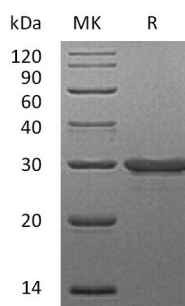


## Summary

<b>Name</b>	Galectin-3/LGALS3
<b>Purity</b>	Greater than 95% as determined by reducing SDS-PAGE
<b>Endotoxin level</b>	<1 EU/ $\mu$ g as determined by LAL test.
<b>Construction</b>	Recombinant Human Galectin-3 is produced by our E.coli expression system and the target gene encoding Ala2-Ile250 is expressed.
<b>Accession #</b>	P17931
<b>Host</b>	E.coli
<b>Species</b>	Human
<b>Predicted Molecular Mass</b>	26 KDa
<b>Formulation</b>	Lyophilized from a 0.2 $\mu$ m filtered solution of 50mM HEPES, 5% Sucrose, 5% Mannitol, 0.06%Tween80, pH7.5.
<b>Shipping</b>	The product is shipped at ambient temperature. Upon receipt, store it immediately at the temperature listed below.
<b>Stability&amp;Storage</b>	Store at $\leq$ -70°C, stable for 6 months after receipt. Store at $\leq$ -70°C, stable for 3 months under sterile conditions after opening. Please minimize freeze-thaw cycles.
<b>Reconstitution</b>	Always centrifuge tubes before opening. Do not mix by vortex or pipetting. It is not recommended to reconstitute to a concentration less than 100 $\mu$ g/ml. Dissolve the lyophilized protein in distilled water. Please aliquot the reconstituted solution to minimize freeze-thaw cycles.

## SDS-PAGE image



## Background

**Product Name: Recombinant Human LGALS3**  
**Catalog #: PEH0703**



---

**Alternative Names**

Galectin-3; Gal-3; 35 kDa Lectin; Carbohydrate-Binding Protein 35; CBP 35; Galactose-Specific Lectin 3; Galactoside-Binding Protein; GALBP; IgE-Binding Protein; L-31; Laminin-Binding Protein; Lectin L-29; Mac-2 Antigen; LGALS3; MAC2

**Background**

The Galectin family of proteins consists of beta-galactoside binding lectins containing homologous carbohydrate recognition domains (CRDs). They also possess hemagglutination activity, which is attributable to their bivalent carbohydrate binding properties. Galectins are active both intracellularly and extracellularly. They have diverse effects on many cellular functions including adhesion, migration, polarity, chemotaxis, proliferation, apoptosis, and differentiation. Galectins may therefore play a key role in many pathological states, including autoimmune diseases, allergic reactions, inflammation, tumor cell metastasis, atherosclerosis, and diabetic complications. The galectins have been classified into the prototype galectins (1, 2, 5, 7, 10, 11, 13, 14), which contain one CRD and exist either as a monomer or a noncovalent homodimer. The chimera galectins (Galectin3) containing one CRD linked to a nonlectin domain, and the tandem repeat Galectins (4, 6, 8, 9, 12) consisting of two CRDs joined by a linker peptide. Galectins lack a classical signal peptide and can be localized to the cytosolic compartments where they have intracellular functions. However, via one or more as yet unidentified nonclassical secretory pathways, galectins can also be secreted to function extracellularly. Individual members of the galectin family have different tissue distribution profiles and exhibit subtle differences in their carbohydrate-binding specificities. Each family member may preferentially bind to a unique subset of cell surface glycoproteins.

**Note**

For Research Use Only , Not for Diagnostic Use.