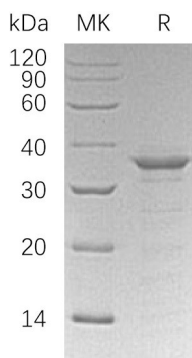


Summary

Name	ETS1/EWSR2
Purity	Greater than 95% as determined by reducing SDS-PAGE
Endotoxin level	<1 EU/μg as determined by LAL test.
Construction	Recombinant Human E26 Transformation-Specific 1 is produced by our E.coli expression system and the target gene encoding Met1-Thr272 is expressed with a 6His tag at the N-terminus.
Accession #	P14921-5
Host	E.coli
Species	Human
Predicted Molecular Mass	33 KDa
Formulation	Lyophilized from a 0.2 μm filtered solution of PBS, 1mM EDTA, pH 7.4.
Shipping	The product is shipped at ambient temperature. Upon receipt, store it immediately at the temperature listed below.
Stability&Storage	Store at ≤-70°C, stable for 6 months after receipt. Store at ≤-70°C, stable for 3 months under sterile conditions after opening. Please minimize freeze-thaw cycles.
Reconstitution	Always centrifuge tubes before opening. Do not mix by vortex or pipetting. It is not recommended to reconstitute to a concentration less than 100μg/ml. Dissolve the lyophilized protein in distilled water. Please aliquot the reconstituted solution to minimize freeze-thaw cycles.

SDS-PAGE image



Product Name: Recombinant Human ETS1 (N-6His)
Catalog #: PEH0608



Background

Alternative Names	ETS1 Protein; Protein C-ets-1; V-ets Erythroblastosis Virus E26 Oncogene Homolog 1 (Avian); Isoform CRA_a; ETS1; hCG_1732038
Background	ETS1 Protein (ETS1) is a nuclear protein that belongs to the ETS family. Members of this family recognize the core consensus DNA sequence GGAA/T in target genes. Proteins function either as transcriptional activators or repressors of numerous genes. They are involved in stem cell development, cell senescence and death, and tumorigenesis. ETS1 is a transcription factor, containing one ETS DNA-binding domain and one PNT (pointed) domain. It has been shown to interact with TTRAP, UBE2I and Death Associated Protein 6.

Note

For Research Use Only , Not for Diagnostic Use.