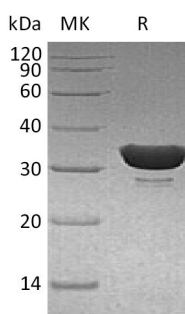


Summary

Name	DCN1-like protein 1/DCUN1D1
Purity	Greater than 95% as determined by reducing SDS-PAGE
Endotoxin level	<1 EU/ μ g as determined by LAL test.
Construction	Recombinant Human DCN1-Like Protein 1 is produced by our E.coli expression system and the target gene encoding Met1-Val259 is expressed with a 6His tag at the N-terminus.
Accession #	Q96GG9
Host	E.coli
Species	Human
Predicted Molecular Mass	32.3 KDa
Formulation	Lyophilized from a 0.2 μ m filtered solution of PBS, pH 7.4.
Shipping	The product is shipped at ambient temperature. Upon receipt, store it immediately at the temperature listed below.
Stability&Storage	Store at \leq -70°C, stable for 6 months after receipt. Store at \leq -70°C, stable for 3 months under sterile conditions after opening. Please minimize freeze-thaw cycles.
Reconstitution	Always centrifuge tubes before opening. Do not mix by vortex or pipetting. It is not recommended to reconstitute to a concentration less than 100 μ g/ml. Dissolve the lyophilized protein in distilled water. Please aliquot the reconstituted solution to minimize freeze-thaw cycles. Always centrifuge tubes before opening. Do not mix by vortex or pipetting. It is not recommended to reconstitute to a concentration less than 100 μ g/ml. Dissolve the lyophilized protein in distilled water. Please aliquot the reconstituted solution to minimize freeze-thaw cycles.

SDS-PAGE image



Background

Product Name: Recombinant Human DCUN1D1 (N-6His)
Catalog #: PEH0520



Alternative Names

DCN1-Like Protein 1; DCUN1 Domain-Containing Protein 1; Defective in Cullin Neddylation Protein 1-Like Protein 1; Squamous Cell Carcinoma-Related Oncogene; DCUN1D1; DCUN1L1; RP42; SCCRO

Background

DCN1-Like Protein 1 is a protein containing 1 DCUN1 domain and 1 UBA-like domain. DCN1-Like Protein 1 contains part of an E3 Ubiquitin Ligase Complex for Neddylation. It is required for Neddylation of Cullin components of E3 Cullin-RING Ubiquitin Ligase complexes. It enhances the rate of Cullins Neddylation. DCN1-Like Protein 1 recruits the NEDD8-charged E2 Enzyme to the Cullin component. DCUN1D1 is involved in the release of inhibitory effects of CAND1 on the Cullin-RING Ligase E3 complex assembly and activity. It acts also as an oncogene facilitating malignant transformation and carcinogenic progression.

Note

For Research Use Only , Not for Diagnostic Use.