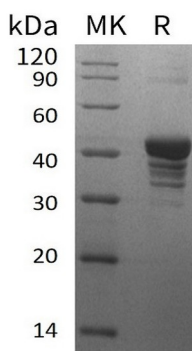


Summary

Name	Cytochrome b-c1 complex subunit /UQCRH
Purity	Greater than 95% as determined by reducing SDS-PAGE
Endotoxin level	<1 EU/μg as determined by LAL test.
Construction	Recombinant Human Cytochrome b-c1 Complex Subunit 6 is produced by our E.coli expression system and the target gene encoding Met1-Lys91 is expressed with a GST tag at the N-terminus.
Accession #	P07919
Host	E.coli
Species	Human
Predicted Molecular Mass	37.5 KDa
Formulation	Lyophilized from a 0.2 μm filtered solution of PBS, pH 7.4.
Shipping	The product is shipped at ambient temperature. Upon receipt, store it immediately at the temperature listed below.
Stability&Storage	Store at ≤-70°C, stable for 6 months after receipt. Store at ≤-70°C, stable for 3 months under sterile conditions after opening. Please minimize freeze-thaw cycles.
Reconstitution	Always centrifuge tubes before opening. Do not mix by vortex or pipetting. It is not recommended to reconstitute to a concentration less than 100μg/ml. Dissolve the lyophilized protein in distilled water. Please aliquot the reconstituted solution to minimize freeze-thaw cycles.

SDS-PAGE image



Background

Product Name: Recombinant Human UQCRH (N-GST)
Catalog #: PEH0507



Alternative Names

Cytochrome b-c1 complex subunit 6; mitochondrial;Complex III subunit 6;Complex III subunit VIII;Cytochrome c1 non-heme 11 kDa protein;Mitochondrial hinge protein;Ubiquinol-cytochrome c reductase complex 11 kDa protein

Background

Cytochrome b-c1 complex subunit 6, mitochondrial (UQCRH) belongs to the UQCRH/QCR6 family, it is a subunit of the respiratory chain protein Ubiquinol Cytochrome c Reductase. This is a component of the ubiquinol-cytochrome c reductase complex (complex III or cytochrome b-c1 complex), which is part of the mitochondrial respiratory chain. UQCRH may mediate formation of the complex between cytochromes c and c1. It may mediate formation of the complex between cytochromes c and c1.

Note

For Research Use Only , Not for Diagnostic Use.