

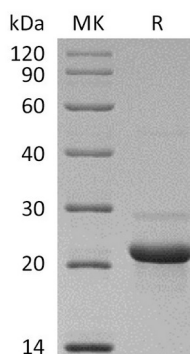
Product Name: Recombinant Human C8 gamma (N-6His)
Catalog #: PEH0435



Summary

| | |
|---------------------------------|---|
| Name | Complement component C8 gamma chain/C8G |
| Purity | Greater than 95% as determined by reducing SDS-PAGE |
| Endotoxin level | <1 EU/μg as determined by LAL test. |
| Construction | Recombinant Human Complement Component C8 Gamma Chain is produced by our E.coli expression system and the target gene encoding Gln21-Arg202 is expressed with a 6His tag at the N-terminus. |
| Accession # | AAI13627.1 |
| Host | E.coli |
| Species | Human |
| Predicted Molecular Mass | 22.6 KDa |
| Formulation | Supplied as a 0.2 μm filtered solution of 20mM PB, 150mM NaCl, pH 7.4. |
| Shipping | The product is shipped on dry ice/polar packs. Upon receipt, store it immediately at the temperature listed below. |
| Stability&Storage | Store at ≤-70°C, stable for 6 months after receipt. Store at ≤-70°C, stable for 3 months under sterile conditions after opening. Please minimize freeze-thaw cycles. |
| Reconstitution | |

SDS-PAGE image



Background

| | |
|--------------------------|---|
| Alternative Names | Complement component C8 gamma chain; C8G |
| Background | Complement component C8 is a constituent of the membrane attack complex, C8 |

Product Name: Recombinant Human C8 gamma (N-6His)
Catalog #: PEH0435



alpha, C8 beta and C8G. C8G is a secreted protein and consists a disulfide-linked C8 alpha-gamma heterodimer and a non-covalently associated C8 beta chain. C8 alpha and C8 beta play an important role in complement-mediated bacterial killing together. C8 is involved in the formation of Membrane Attack Complex on bacterial cell membranes. C8 binds to the C5B-7 complex, forming the C5B-8 complex. C5-B8 binds C9 and acts as a catalyst in the polymerization of C9. The gamma subunit seems to be able to bind retinol. Patients lacking C8 are susceptible to certain bacterial infections.

Note

For Research Use Only , Not for Diagnostic Use.