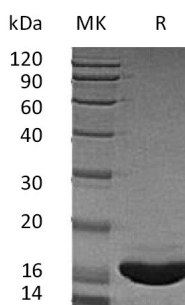


Summary

Name	SCF/Stem Cell Factor/c-kit Ligand/KITLG
Purity	Greater than 95% as determined by reducing SDS-PAGE
Endotoxin level	<0.01 EU/ μ g as determined by LAL test.
Construction	Recombinant Human Stem Cell Factor is produced by our E.coli expression system and the target gene encoding Glu26-Ala189 is expressed.
Accession #	P21583
Host	E.coli
Species	Human
Predicted Molecular Mass	18.6 KDa
Formulation	Lyophilized from a 0.2 μ m filtered solution of 20mM PB, 150mM NaCl, pH 7.0.
Shipping	The product is shipped at ambient temperature. Upon receipt, store it immediately at the temperature listed below.
Stability&Storage	Lyophilized protein should be stored at $\leq -20^{\circ}\text{C}$, stable for one year after receipt. Reconstituted protein solution can be stored at 2-8 $^{\circ}\text{C}$ for 2-7 days. Aliquots of reconstituted samples are stable at $\leq -20^{\circ}\text{C}$ for 3 months.
Reconstitution	Always centrifuge tubes before opening. Do not mix by vortex or pipetting. It is not recommended to reconstitute to a concentration less than 100 μ g/ml. Dissolve the lyophilized protein in distilled water. Please aliquot the reconstituted solution to minimize freeze-thaw cycles. Always centrifuge tubes before opening. Do not mix by vortex or pipetting. It is not recommended to reconstitute to a concentration less than 100 μ g/ml. Dissolve the lyophilized protein in distilled water. Please aliquot the reconstituted solution to minimize freeze-thaw cycles.

SDS-PAGE image



Background

Product Name: Recombinant Human SCF
Catalog #: PEH0413

Alternative Names

Kit Ligand; Mast Cell Growth Factor; MGF; Stem Cell Factor; SCF; c-Kit ligand; KITLG; MGF; SCF

Background

Stem Cell Factor (SCF) is a hematopoietic growth factor that exerts its activity at the early stages of hematopoiesis. SCF stimulates the proliferation of myeloid, erythroid, and lymphoid progenitors in bone marrow cultures and has been shown to act synergistically with colony stimulating factors.

Note

For Research Use Only , Not for Diagnostic Use.