

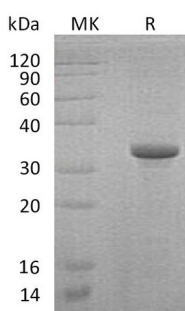
**Product Name: Recombinant Human Endoglin (N-Trx-6His)**  
**Catalog #: PEH0278**



## Summary

<b>Name</b>	CD105/Endoglin
<b>Purity</b>	Greater than 95% as determined by reducing SDS-PAGE
<b>Endotoxin level</b>	<1 EU/μg as determined by LAL test.
<b>Construction</b>	Recombinant Human Endoglin is produced by our E.coli expression system and the target gene encoding Glu26-Gln176(Gly40Asp) is expressed with a Trx, 6His tag at the N-terminus.
<b>Accession #</b>	P17813
<b>Host</b>	E.coli
<b>Species</b>	Human
<b>Predicted Molecular Mass</b>	33.6 KDa
<b>Formulation</b>	Supplied as a 0.2 μm filtered solution of 20mM PB, 150mM NaCl, pH 7.4.
<b>Shipping</b>	The product is shipped on dry ice/polar packs. Upon receipt, store it immediately at the temperature listed below.
<b>Stability&amp;Storage</b>	Store at ≤-70°C, stable for 6 months after receipt. Store at ≤-70°C, stable for 3 months under sterile conditions after opening. Please minimize freeze-thaw cycles.
<b>Reconstitution</b>	

## SDS-PAGE image



## Background

<b>Alternative Names</b>	Endoglin; END; CD105; ENG
<b>Background</b>	Endoglin is a single-pass type I membrane protein which restricted to endothelial cells in all tissues except bone marrow. Endoglin as major glycoprotein of vascular

**Product Name: Recombinant Human Endoglin (N-Trx-6His)**  
**Catalog #: PEH0278**



---

endothelium, it has been found on endothelial cells, activated macrophages, fibroblasts, and smooth muscle cells. Furthermore, Homodimer forms a heteromeric complex with the signaling receptors for transforming growth factor-beta: TGFBR1 and/or TGFBR2. It may have an important role in the binding of endothelial cells to integrins and/or other RGD receptors. Defects in ENG are the cause of hereditary hemorrhagic telangiectasia type 1 (HHT1), which is an autosomal dominant multisystemic vascular dysplasia, characterized by recurrent epistaxis, muco-cutaneous telangiectases, gastro-intestinal hemorrhage, and pulmonary (PAVM), cerebral (CAVM) and hepatic arteriovenous malformations.

**Note**

For Research Use Only , Not for Diagnostic Use.