

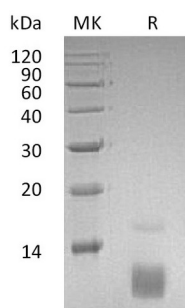
Product Name: Recombinant Human CCL5
Catalog #: PEH0272



Summary

| | |
|---------------------------------|--|
| Name | CCL5/C-C Motif Chemokine 5/RANTES |
| Purity | Greater than 95% as determined by reducing SDS-PAGE |
| Endotoxin level | <1 EU/μg as determined by LAL test. |
| Construction | Recombinant Human C-C Motif Chemokine 5 is produced by our E.coli expression system and the target gene encoding Ser24-Ser91 is expressed. |
| Accession # | P13501 |
| Host | E.coli |
| Species | Human |
| Predicted Molecular Mass | 7.8 kDa |
| Formulation | Lyophilized from a 0.2 μm filtered solution of 20mM Citrate, 6% Trehalose, 4% Mannitol, 0.05% Tween 80, pH4.0. |
| Shipping | The product is shipped at ambient temperature. Upon receipt, store it immediately at the temperature listed below. |
| Stability&Storage | Lyophilized protein should be stored at ≤ -20°C, stable for one year after receipt. Reconstituted protein solution can be stored at 2-8°C for 2-7 days. Aliquots of reconstituted samples are stable at ≤ -20°C for 3 months. |
| Reconstitution | Always centrifuge tubes before opening. Do not mix by vortex or pipetting. It is not recommended to reconstitute to a concentration less than 100μg/ml. Dissolve the lyophilized protein in distilled water. Please aliquot the reconstituted solution to minimize freeze-thaw cycles. |

SDS-PAGE image



Background

Product Name: Recombinant Human CCL5
Catalog #: PEH0272

Alternative Names

C-C Motif Chemokine 5; EoCP; Eosinophil Chemotactic Cytokine; SIS-Delta; Small-Inducible Cytokine A5; T Cell-Specific Protein P228; TCP228; T-Cell-Specific Protein RANTES; CCL5; D17S136E; SCYA5

Background

Human Chemokine (C-C Motif) Ligand 5 (CCL5) plays an active role in recruiting leukocytes into inflammatory sites. CCL5 is secreted by many cell types at inflammatory sites and it exerts a wide range of activities through the receptors CCR1, CCR3, CCR4, and CCR5. N-Terminal truncated CCL5/RANTES, Met-RANTES, and amino-oxypentane (AOP)-RANTES exhibit antagonist or partial agonist functions on their receptors. CCL5/RANTES attracts different subtypes of leukocytes into inflamed tissue and intervenes in a wide range of allergic and autoimmune diseases.

Note

For Research Use Only , Not for Diagnostic Use.