

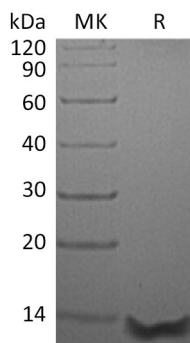
**Product Name: Recombinant Human CCL26 (68AA)**  
**Catalog #: PEH0267**



## Summary

<b>Name</b>	CCL26/Eotaxin-3 (27-94)
<b>Purity</b>	Greater than 95% as determined by reducing SDS-PAGE
<b>Endotoxin level</b>	<1 EU/μg as determined by LAL test.
<b>Construction</b>	Recombinant Human C-C Motif Chemokine 26 is produced by our E.coli expression system and the target gene encoding Ser27-Leu94 is expressed.
<b>Accession #</b>	Q9Y258
<b>Host</b>	E.coli
<b>Species</b>	Human
<b>Predicted Molecular Mass</b>	8.21 KDa
<b>Formulation</b>	Lyophilized from a 0.2 μm filtered solution of 20mM PB, 150mM NaCl, pH 7.2.
<b>Shipping</b>	The product is shipped at ambient temperature. Upon receipt, store it immediately at the temperature listed below.
<b>Stability&amp;Storage</b>	Lyophilized protein should be stored at ≤ -20°C, stable for one year after receipt. Reconstituted protein solution can be stored at 2-8°C for 2-7 days. Aliquots of reconstituted samples are stable at ≤ -20°C for 3 months.
<b>Reconstitution</b>	Always centrifuge tubes before opening. Do not mix by vortex or pipetting. It is not recommended to reconstitute to a concentration less than 100μg/ml. Dissolve the lyophilized protein in distilled water. Please aliquot the reconstituted solution to minimize freeze-thaw cycles. Always centrifuge tubes before opening. Do not mix by vortex or pipetting. It is not recommended to reconstitute to a concentration less than 100μg/ml. Dissolve the lyophilized protein in distilled water. Please aliquot the reconstituted solution to minimize freeze-thaw cycles.

## SDS-PAGE image



## Background

**Product Name: Recombinant Human CCL26 (68AA)**  
**Catalog #: PEH0267**



---

**Alternative Names**

C-C Motif Chemokine 26; CC Chemokine IMAC; Eotaxin-3; Macrophage Inflammatory Protein 4-Alpha; MIP-4-Alpha; Small-Inducible Cytokine A26; Thymic Stroma Chemokine-1; TSC-1; CCL26; SCYA26

**Background**

Chemokine (C C Motif) Ligand 26 (CCL26) is a novel small cytokine belonging to the CC chemokine family, which involved in immunoregulatory and inflammatory processes. CCL26 is expressed constitutively in thymus, but only transiently in phytohemagglutinin-stimulated peripheral blood mononuclear cells. It specifically binds and induces chemotaxis in T cells and elicits its effects by interacting with the chemokine receptor CCR4. Eotaxin-3/CCL26, along with Eotaxin-1 and Eotaxin-2, selectively activates the CC chemokine receptor 3 (CCR3). The Eotaxin-3-CCR3 interaction may play an important role in allergic diseases such as atopic dermatitis and bronchial asthma. The full-length cDNA for Eotaxin-3 encodes a protein of 94 amino acids with a putative signal peptide of either 23 or 26 amino acid residues. Both the 71 and 68 amino acid residue variants of recombinant Eotaxin-3 demonstrate equal potency in inducing chemotaxis of a human CCR3-transfected cell line. Unlike most other CC chemokines, Eotaxin-3 maps to human chromosome 7q11.2, within 40 kilobases of the Eotaxin-2 loci. Eotaxin-3 and Eotaxin-2 are unique in that they are the only chemokines identified to date that map to chromosome 7.

**Note**

For Research Use Only , Not for Diagnostic Use.