

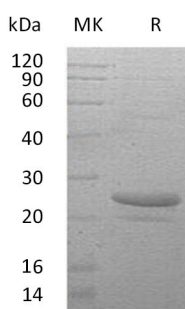
Product Name: Recombinant Human CT-1 (N-6His)
Catalog #: PEH0233



Summary

Name	Cardiotrophin-1/CTF1
Purity	Greater than 95% as determined by reducing SDS-PAGE
Endotoxin level	<1 EU/μg as determined by LAL test.
Construction	Recombinant Human Cardiotrophin-1 is produced by our E.coli expression system and the target gene encoding Met1-Ala201 is expressed with a 6His tag at the N-terminus.
Accession #	Q16619
Host	E.coli
Species	Human
Predicted Molecular Mass	22.6 KDa
Formulation	Supplied as a 0.2 μm filtered solution of PBS, 2mM EDTA, 5% Trehalose, pH 7.4.
Shipping	The product is shipped on dry ice/polar packs. Upon receipt, store it immediately at the temperature listed below.
Stability&Storage	Store at ≤-70°C, stable for 6 months after receipt. Store at ≤-70°C, stable for 3 months under sterile conditions after opening. Please minimize freeze-thaw cycles.
Reconstitution	

SDS-PAGE image



Background

Alternative Names	Cardiotrophin-1; CT-1; CTF1;
Background	Cardiotrophin-1, also known as CT-1 and CTF1, is a member of the IL-6 superfamily. It is a secreted cytokine that is expressed in heart, skeletal muscle,

Product Name: Recombinant Human CT-1 (N-6His)
Catalog #: PEH0233



prostate and ovary, and to lower levels in lung, kidney, pancreas, thymus, testis and small intestine. The protein exerts its cellular effects by interacting with the glycoprotein 130 (gp130)/leukemia inhibitory factor receptor beta (LIFR) heterodimer. In addition, CT-1 activates phosphatidylinositol 3-kinase (PI-3 kinase) in cardiac myocytes and enhances transcription factor NF- κ B DNA -binding activities.

Note

For Research Use Only , Not for Diagnostic Use.