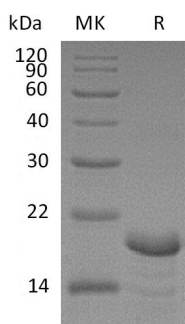


Summary

Name	Calcineurin Subunit B Type 1/CNB/PPP3R1
Purity	Greater than 95% as determined by reducing SDS-PAGE
Endotoxin level	<1 EU/μg as determined by LAL test.
Construction	Recombinant Human Calcineurin Subunit B Type 1 is produced by our E.coli expression system and the target gene encoding Met1-Val170 is expressed with a 6His tag at the N-terminus.
Accession #	P63098
Host	E.coli
Species	Human
Predicted Molecular Mass	21.46 KDa
Formulation	Lyophilized from a 0.2 μm filtered solution of 20mM Tris-HCl, 100mM NaCl, 2mM DTT, pH 8.0 .
Shipping	The product is shipped at ambient temperature. Upon receipt, store it immediately at the temperature listed below.
Stability&Storage	Store at ≤-70°C, stable for 6 months after receipt. Store at ≤-70°C, stable for 3 months under sterile conditions after opening. Please minimize freeze-thaw cycles.
Reconstitution	Always centrifuge tubes before opening. Do not mix by vortex or pipetting. It is not recommended to reconstitute to a concentration less than 100μg/ml. Dissolve the lyophilized protein in distilled water. Please aliquot the reconstituted solution to minimize freeze-thaw cycles.

SDS-PAGE image



Background

Product Name: Recombinant Human CNB1 (N-6His)
Catalog #: PEH0198



Alternative Names

Calcineurin Subunit B Type 1; Protein Phosphatase 2B Regulatory Subunit 1; Protein Phosphatase 3 Regulatory Subunit B Alpha Osoform 1; PPP3R1; CNA2; CNB

Background

Calcineurin Subunit B Type 1 belongs to the calcineurin regulatory subunit family. Calcineurin Subunit B Type 1 is a Ser/Thr-specific calcium and calmodulin-dependent protein phosphatase. It is composed of a catalytic subunit (A) and a regulatory subunit (B). It contains four EF-hand domains and four functional calcium-binding sites. Calcineurin Subunit B Type 1 plays an important role in the T cell activation pathway.

Note

For Research Use Only , Not for Diagnostic Use.