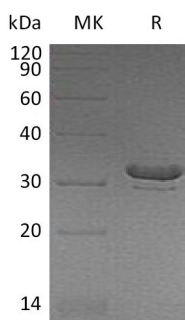


Summary

Name	Bridging integrator 2/BIN2/BRAP1
Purity	Greater than 95% as determined by reducing SDS-PAGE
Endotoxin level	<1 EU/μg as determined by LAL test.
Construction	Recombinant Human Bridging Integrator 2 is produced by our E.coli expression system and the target gene encoding Met1-Asn244 is expressed with a 6His tag at the N-terminus.
Accession #	Q9UBW5
Host	E.coli
Species	Human
Predicted Molecular Mass	30.58 KDa
Formulation	Lyophilized from a 0.2 μm filtered solution of 20mM Tris-HCl, 150mM NaCl, pH 8.0.
Shipping	The product is shipped at ambient temperature. Upon receipt, store it immediately at the temperature listed below.
Stability&Storage	Store at ≤-70°C, stable for 6 months after receipt. Store at ≤-70°C, stable for 3 months under sterile conditions after opening. Please minimize freeze-thaw cycles.
Reconstitution	Always centrifuge tubes before opening. Do not mix by vortex or pipetting. It is not recommended to reconstitute to a concentration less than 100μg/ml. Dissolve the lyophilized protein in distilled water. Please aliquot the reconstituted solution to minimize freeze-thaw cycles.

SDS-PAGE image



Background

Product Name: Recombinant Human BIN2 (N-6His)
Catalog #: PEH0170



Alternative Names

Bridging Integrator 2; Breast Cancer-Associated Protein 1; BIN2; BRAP1

Background

Bridging Integrator 2 (BIN2) is a cytoplasmic protein. BIN2 contains one BAR domain and Interacts with BIN1. BIN2 is highly expressed in some hematopoietic tissues, including peripheral blood, thymus, colon and placenta. BIN2 is an Arabidopsis GSK3-like kinase that negatively regulates brassinosteroid (BR) signaling. Genetic studies show that BIN2 is inhibited in response to BR perception at the cell surface to relieve its inhibitory effects on downstream targets.

Note

For Research Use Only , Not for Diagnostic Use.