

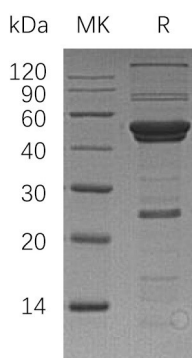
Product Name: Recombinant Human ATG4A (N-6His)
Catalog #: PEH0111



Summary

Name	ATG4A
Purity	Greater than 95% as determined by reducing SDS-PAGE
Endotoxin level	<1 EU/μg as determined by LAL test.
Construction	Recombinant Human Autophagy Related 4 Homolog A is produced by our E.coli expression system and the target gene encoding Met1-Val398 is expressed with a 6His tag at the N-terminus.
Accession #	Q8WYN0
Host	E.coli
Species	Human
Predicted Molecular Mass	47.5 KDa
Formulation	Supplied as a 0.2 μm filtered solution of PBS, pH 7.4.
Shipping	The product is shipped on dry ice/polar packs. Upon receipt, store it immediately at the temperature listed below.
Stability&Storage	Store at ≤-70°C, stable for 6 months after receipt. Store at ≤-70°C, stable for 3 months under sterile conditions after opening. Please minimize freeze-thaw cycles.
Reconstitution	

SDS-PAGE image



Background

Alternative Names	Cysteine Protease ATG4A; AUT-Like 2 Cysteine Endopeptidase; Autophagin-2; Autophagy-Related Cysteine Endopeptidase 2; Autophagy-Related Protein 4 Homolog A; hAPG4A; ATG4A; APG4A; AUTL2
--------------------------	------------------------------------------------------------------------------------------------------------------------------------------------------------------------------------------

Product Name: Recombinant Human ATG4A (N-6His)
Catalog #: PEH0111



Background

Cysteine Protease ATG4A (ATG4A) is a cytoplasmic protein that belongs to the peptidase C54 family. ATG4A is widely expressed in many tissues at a low level, but the highest expression is observed in skeletal muscle and brain. ATG4A is a cysteine protease required for autophagy; it cleaves the C-terminal part of MAP1LC3, GABARAPL2 or GABARAP. ATG4A is inhibited by N-ethylmaleimide. It is suggested that ATG4A has a significant role in suppressing various cancers.

Note

For Research Use Only , Not for Diagnostic Use.