

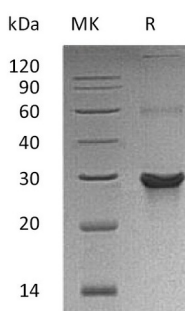
**Product Name: Recombinant Human ATG10 (C-6His, N-T7 tag)**  
**Catalog #: PEH0109**



## Summary

<b>Name</b>	ATG10/Ubiquitin-like-conjugating enzyme ATG10
<b>Purity</b>	Greater than 95% as determined by reducing SDS-PAGE
<b>Endotoxin level</b>	<1 EU/μg as determined by LAL test.
<b>Construction</b>	Recombinant Human Autophagy Related 10 Homolog is produced by our E.coli expression system and the target gene encoding Met1-Thr190 is expressed with a T7 tag at the N-terminus, 6His tag at the C-terminus.
<b>Accession #</b>	Q9H0Y0
<b>Host</b>	E.coli
<b>Species</b>	Human
<b>Predicted Molecular Mass</b>	24.5 KDa
<b>Formulation</b>	Supplied as a 0.2 μm filtered solution of 20mM Tris-HCl, 8% Sucrose, 20% Glycerol, 0.02% Tween 80, 3mM TCEP, pH 8.5.
<b>Shipping</b>	The product is shipped on dry ice/polar packs. Upon receipt, store it immediately at the temperature listed below.
<b>Stability&amp;Storage</b>	Store at ≤-70°C, stable for 6 months after receipt. Store at ≤-70°C, stable for 3 months under sterile conditions after opening. Please minimize freeze-thaw cycles.
<b>Reconstitution</b>	

## SDS-PAGE image



## Background

**Alternative Names** Ubiquitin-Like-Conjugating Enzyme ATG10; Autophagy-Related Protein 10; APG10-Like; ATG10

**Background** Ubiquitin-Like-Conjugating Enzyme ATG10 (ATG10) is a ubiquitous 28kDa member of the ATG10 family protein. ATG10 acts as an E2-like enzyme, catalyzes the

**Product Name: Recombinant Human ATG10 (C-6His, N-T7 tag)**  
**Catalog #: PEH0109**



---

transfer of ATG12 to ATG5 during in the initial stages of autophagosome formation. The heterodimer of ATG5 and ATG12 subsequently associates non-covalently with an ATG16 multimer to generate an antophagosome. ATG10 plays a role in the conjugation of ATG12 to ATG5 by interaction with MAP1LC3A. In addition, ATG10 can directly interact with ATG5 or ATG7.

### **Note**

For Research Use Only , Not for Diagnostic Use.