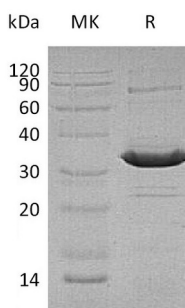


Summary

Name	ATF1/Cyclic AMP-dependent transcription factor ATF-1
Purity	Greater than 95% as determined by reducing SDS-PAGE
Endotoxin level	<1 EU/μg as determined by LAL test.
Construction	Recombinant Human Activating Transcription Factor 1 is produced by our E.coli expression system and the target gene encoding Met1-Val271 is expressed with a 6His tag at the C-terminus.
Accession #	P18846
Host	E.coli
Species	Human
Predicted Molecular Mass	30.3 KDa
Formulation	Lyophilized from a 0.2 μm filtered solution of PBS, pH 7.4.
Shipping	The product is shipped at ambient temperature. Upon receipt, store it immediately at the temperature listed below.
Stability&Storage	Lyophilized protein should be stored at ≤ -20°C, stable for one year after receipt. Reconstituted protein solution can be stored at 2-8°C for 2-7 days. Aliquots of reconstituted samples are stable at ≤ -20°C for 3 months.
Reconstitution	Always centrifuge tubes before opening. Do not mix by vortex or pipetting. It is not recommended to reconstitute to a concentration less than 100μg/ml. Dissolve the lyophilized protein in distilled water. Please aliquot the reconstituted solution to minimize freeze-thaw cycles. Always centrifuge tubes before opening. Do not mix by vortex or pipetting. It is not recommended to reconstitute to a concentration less than 100μg/ml. Dissolve the lyophilized protein in distilled water. Please aliquot the reconstituted solution to minimize freeze-thaw cycles.

SDS-PAGE image



Background

Product Name: Recombinant Human ATF1 (C-6His)
Catalog #: PEH0108



Alternative Names

Cyclic AMP-dependent transcription factor ATF-1;cAMP-dependent transcription factor ATF-1;Activating transcription factor 1;

Background

Cyclic AMP-dependent transcription factor ATF-1(ATF1) which contains 1 bZIP (basic-leucine zipper) domain and 1 KID (kinase-inducible) domain, belongs to the bZIP family. It influences cellular physiologic processes by regulating the expression of downstream target genes, which are related to growth, survival, and other cellular activities. ATF1 binds the cAMP response element (CRE) (consensus: 5-GTGACGT[AC][AG]-3), a sequence present in many viral and cellular promoters. It also binds to the Tax-responsive element (TRE) of HTLV-I. ATF1 mediates PKA-induced stimulation of CRE-reporter genes, represses the expression of FTH1 and other antioxidant detoxification genes, triggers cell proliferation and transformation. ATF1 is phosphorylated at serine 63 in its kinase-inducible domain by serine/threonine kinases, cAMP-dependent protein kinase A, calmodulin-dependent protein kinase I/II, mitogen- and stress-activated protein kinase and CDK3. Its phosphorylation enhances its transactivation and transcriptional activities, and enhances cell transformation.

Note

For Research Use Only , Not for Diagnostic Use.