

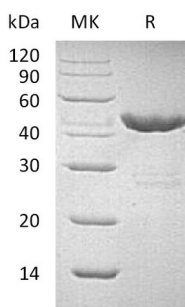
Product Name: Recombinant Human GOT1 (C-6His)
Catalog #: PEH0106



Summary

Name	Aspartate Aminotransferase, Cytoplasmic/GOT1
Purity	Greater than 95% as determined by reducing SDS-PAGE
Endotoxin level	<1 EU/μg as determined by LAL test.
Construction	Recombinant Human Glutamate Oxaloacetate Transaminase 1 is produced by our E.coli expression system and the target gene encoding Ala2-Gln413 is expressed with a 6His tag at the C-terminus.
Accession #	P17174
Host	E.coli
Species	Human
Predicted Molecular Mass	47.31 KDa
Formulation	Supplied as a 0.2 μm filtered solution of 20mM Tris-HCl, 100mM NaCl, 2mM DTT, 20% Glycerol, pH 7.5.
Shipping	The product is shipped on dry ice/polar packs. Upon receipt, store it immediately at the temperature listed below.
Stability&Storage	Store at ≤-70°C, stable for 6 months after receipt. Store at ≤-70°C, stable for 3 months under sterile conditions after opening. Please minimize freeze-thaw cycles.
Reconstitution	

SDS-PAGE image



Background

Alternative Names	Aspartate Aminotransferase Cytoplasmic; Glutamate Oxaloacetate Transaminase 1; Transaminase A; GOT1
Background	Glutamate Oxaloacetate Transaminase 1 (GOT1) is a cytoplasmic protein. GOT1 belongs to the class-I pyridoxal-phosphate-dependent aminotransferase family.

Product Name: Recombinant Human GOT1 (C-6His)
Catalog #: PEH0106



GOT1 is a pyridoxal phosphate-dependent enzyme that exists in cytoplasmic and mitochondrial forms. GOT1 plays a key role in amino acid metabolism and the urea and tricarboxylic acid cycles. GOT1 involves in L-methionine salvage from methylthioadenosine, aspartate catabolic process, cellular response to insulin stimulus, polyamine metabolic process, and glucocorticoid stimulus.

Note

For Research Use Only , Not for Diagnostic Use.