

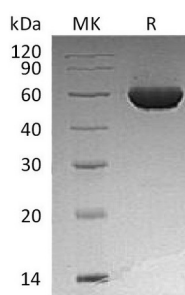
**Product Name: Recombinant Human ALDH1A2 (N-6His)**  
**Catalog #: PEH0034**



## Summary

<b>Name</b>	ALDH1A2/Aldehyde Dehydrogenase 1-A2
<b>Purity</b>	Greater than 95% as determined by reducing SDS-PAGE
<b>Endotoxin level</b>	<1 EU/μg as determined by LAL test.
<b>Construction</b>	Recombinant Human Aldehyde Dehydrogenase Family 1 Member A2 is produced by our E.coli expression system and the target gene encoding Met1-Ser518 is expressed with a 6His tag at the N-terminus.
<b>Accession #</b>	O94788
<b>Host</b>	E.coli
<b>Species</b>	Human
<b>Predicted Molecular Mass</b>	58.2 KDa
<b>Formulation</b>	Supplied as a 0.2 μm filtered solution of 20mM Tris-HCl, 150mM NaCl, 20% Glycerol, pH 7.5.
<b>Shipping</b>	The product is shipped on dry ice/polar packs. Upon receipt, store it immediately at the temperature listed below.
<b>Stability&amp;Storage</b>	Store at ≤-70°C, stable for 6 months after receipt. Store at ≤-70°C, stable for 3 months under sterile conditions after opening. Please minimize freeze-thaw cycles.
<b>Reconstitution</b>	

## SDS-PAGE image



## Background

<b>Alternative Names</b>	Aldehyde dehydrogenase family 1 member A2; Retinaldehyde-specific dehydrogenase type 2; RALDH(II); Retinal dehydrogenase 2; ALDH1A2; RALDH2
<b>Background</b>	Aldehyde dehydrogenase 1 family member A2 (ALDH1A2), also known as retinaldehyde dehydrogenase 2 (RALDH2), belongs to the aldehyde dehydrogenase family which contains two members, the ALDH1 s (ALDH1A1,

**Product Name: Recombinant Human ALDH1A2 (N-6His)**  
**Catalog #: PEH0034**



---

ALDH1A2 and ALDH1A3) and the 9-cis retinaldehyde dehydrogenase ALDH8 s. ALDH1A2 is key enzyme that catalyzes the synthesis of retinoic acid (RA) from retinaldehyde. RA is a paracrine hormone signaling molecule that functions in developing and adult tissues. ALDH1A2 was also found to regulate normal and tumor cell growth and differentiation. Several studies showed that ALDH1A2 expression is increased after the appearance of AraC resistance in clinical cases which means this protein is effective in AraC resistance.

### **Note**

For Research Use Only , Not for Diagnostic Use.