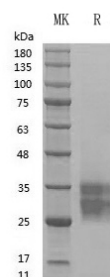


Product Name: Recombinant Human SCF
Catalog #: PCH2536

Summary

Name	SCF
Purity	Greater than 98% as determined by reducing SDS-PAGE
Endotoxin level	≤10 EU/mg
Construction	Recombinant Human SCF is produced by our Mammalian cell expression system and the target gene encoding Glu 26-Ala 190 is expressed.
Accession #	P21583
Host	Human Cells
Species	Human
Predicted Molecular Mass	18.5 kDa
Formulation	Lyophilized From PBS,5% mannitol and 0.01% Tween 80, pH7.4
Shipping	The product is shipped on dry ice/polar packs.Upon receipt, store it immediately at the temperature listed below.
Stability&Storage	Store at ≤-70°C, stable for 6 months after receipt.Store at ≤-70°C, stable for 3 months under sterile conditions after opening. Please minimize freeze-thaw cycles.
Reconstitution	Always centrifuge tubes before opening.Do not mix by vortex or pipetting.It is not recommended to reconstitute to a concentration less than 100µg/ml.Dissolve the lyophilized protein in distilled water.Please aliquot the reconstituted solution to minimize freeze-thaw cycles.

SDS-PAGE image



Background

Product Name: Recombinant Human SCF
Catalog #: PCH2536

Alternative Names

Kit Ligand; Mast Cell Growth Factor; MGF; Stem Cell Factor; SCF; c-Kit ligand; KITLG; MGF; SCF

Background

Stem Cell Factor (SCF) is a hematopoietic growth factor that exerts its activity at the early stages of hematopoiesis. SCF stimulates the proliferation of myeloid, erythroid, and lymphoid progenitors in bone marrow cultures and has been shown to act synergistically with colony stimulating factors.

Note

For Research Use Only , Not for Diagnostic Use.