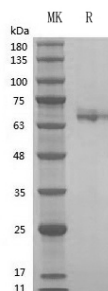


Product Name: Recombinant Human IL-23
Catalog #: PCH2527

Summary

Name	IL-23
Purity	Greater than 98% as determined by reducing SDS-PAGE
Endotoxin level	≤10 EU/mg
Construction	Recombinant Human IL-23 is produced by our Mammalian cell expression system and the target gene encoding Ile23-Ser328&Arg23-Pro189 is expressed.
Accession #	P29460(P40), AAG37232(P19)
Host	Human Cells
Species	Human
Predicted Molecular Mass	55.0 kDa(IL-23singlechain);36.5 kDa(p40)&18.5 kDa(p19)
Formulation	Lyophilized From PBS,5% mannitol and 0.01% Tween 80, pH7.4
Shipping	The product is shipped on dry ice/polar packs.Upon receipt, store it immediately at the temperature listed below.
Stability&Storage	Store at ≤-70°C, stable for 6 months after receipt.Store at ≤-70°C, stable for 3 months under sterile conditions after opening. Please minimize freeze-thaw cycles.
Reconstitution	Always centrifuge tubes before opening.Do not mix by vortex or pipetting.It is not recommended to reconstitute to a concentration less than 100µg/ml.Dissolve the lyophilized protein in distilled water.Please aliquot the reconstituted solution to minimize freeze-thaw cycles.Always centrifuge tubes before opening.Do not mix by vortex or pipetting.It is not recommended to reconstitute to a concentration less than 100µg/ml.Dissolve the lyophilized protein in distilled water.Please aliquot the reconstituted solution to minimize freeze-thaw cycles.

SDS-PAGE image



Background

Product Name: Recombinant Human IL-23
Catalog #: PCH2527



Alternative Names

SGRF; IL-23p19; CLMF p40; IL-12 subunit p40; NKSF2

Background

Interleukin-23 (IL-23) is a heterodimeric cytokine that belongs to the IL-12 cytokine family. It is composed of two subunits, p19 and p40, with the p40 subunit being shared with IL-12. IL-23 is primarily secreted by activated macrophages and dendritic cells located in peripheral tissues such as skin, intestinal mucosa, and lung. This cytokine plays a crucial role in the development and maintenance of autoimmune inflammation, particularly through its ability to induce IL-17 production, which is a unique role compared to IL-12.

Note

For Research Use Only , Not for Diagnostic Use.