

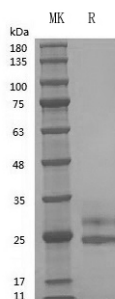
Product Name: Recombinant Human FLT-3L
Catalog #: PCH2512



Summary

Name	FLT-3L
Purity	Greater than 98% as determined by reducing SDS-PAGE
Endotoxin level	≤10 EU/mg
Construction	Recombinant Human FLT-3L is produced by our Mammalian cell expression system and the target gene encoding Thr27-Pro184 is expressed.
Accession #	P49771
Host	Human Cells
Species	Human
Predicted Molecular Mass	17.8 kDa
Formulation	Lyophilized From PBS,5% mannitol and 0.01% Tween 80, pH7.4
Shipping	The product is shipped on dry ice/polar packs.Upon receipt, store it immediately at the temperature listed below.
Stability&Storage	Store at ≤-70°C, stable for 6 months after receipt.Store at ≤-70°C, stable for 3 months under sterile conditions after opening. Please minimize freeze-thaw cycles.
Reconstitution	Always centrifuge tubes before opening.Do not mix by vortex or pipetting.It is not recommended to reconstitute to a concentration less than 100µg/ml.Dissolve the lyophilized protein in distilled water.Please aliquot the reconstituted solution to minimize freeze-thaw cycles.

SDS-PAGE image



Background

Product Name: Recombinant Human FLT-3L
Catalog #: PCH2512



Alternative Names

Fms-Related Tyrosine Kinase 3 Ligand; Flt3 Ligand; Flt3L; SL Cytokine; FLT3LG

Background

Fms-Related Tyrosine Kinase 3 Ligand (FLT3LG) is a hematopoietic four helical bundle cytokine. Mature human Flt-3 Ligand consists of an extracellular domain (ECD) with a cytokine-like domain and a juxtamembrane tether region, a transmembrane segment, and a cytoplasmic tail. Human and mouse Flt-3 Ligand show cross-species activity. Flt-3 Ligand is expressed as a noncovalently-linked dimer by T cells and bone marrow and thymic fibroblasts. It is structurally homologous to stem cell factor (SCF) and colony stimulating factor 1 (CSF-1). In synergy with other growth factors, Flt3 ligand stimulates the proliferation and differentiation of various blood cell progenitors by activation of Flt 3 receptor.

Note

For Research Use Only , Not for Diagnostic Use.