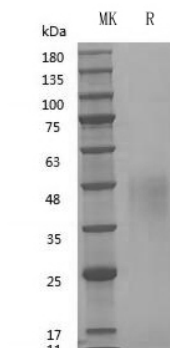


## Summary

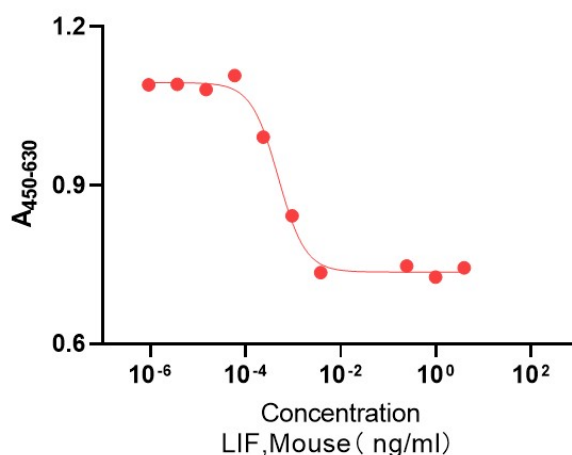
<b>Name</b>	LIF
<b>Purity</b>	Greater than 95% as determined by reducing SDS-PAGE
<b>Endotoxin level</b>	≤10 EU/mg
<b>Construction</b>	Recombinant Mouse LIF is produced by our Mammalian cell expression system and the target gene encoding Ser24-Phe203 is expressed.
<b>Accession #</b>	P09056
<b>Tag</b>	Tag free
<b>Host</b>	Mammalian cell
<b>Species</b>	Mouse
<b>Predicted MW</b>	19.9 kDa
<b>Form</b>	Lyophilized
<b>Buffer</b>	PBS,5% mannitol and 0.01% Tween 80, pH7.4
<b>Shipping</b>	The product is shipped at ambient temperature. Upon receipt, store it immediately at the temperature listed below.
<b>Stability&amp;Storage</b>	Store at ≤-70°C, stable for 6 months after receipt. Store at ≤-70°C, stable for 3 months under sterile conditions after opening. Please minimize freeze-thaw cycles.
<b>Reconstitution</b>	Always centrifuge tubes before opening. Do not mix by vortex or pipetting. It is not recommended to reconstitute to a concentration less than 100µg/ml. Dissolve the lyophilized protein in distilled water. Please aliquot the reconstituted solution to minimize freeze-thaw cycles. Always centrifuge tubes before opening. Do not mix by vortex or pipetting. It is not recommended to reconstitute to a concentration less than 100µg/ml. Dissolve the lyophilized protein in distilled water. Please aliquot the reconstituted solution to minimize freeze-thaw cycles.

## SDS-PAGE image

Product Name: GMP Recombinant Mouse LIF  
Catalog#: PCM90056



## Bioactivity image



## Background

### Alternative Names

Leukemia Inhibitory Factor; LIF; Differentiation-Stimulating Factor; D Factor; Melanoma-Derived LPL Inhibitor; MLPLI; Emfilermin; LIF; HILDA

### References

Leukemia inhibitory factor, or LIF, an interleukin 6 class cytokine, is a protein in cells that affects cell growth and development. Leukemia Inhibitory Factor has several functions such as cholinergic neuron differentiation, control of stem cell pluripotency, bone & fat metabolism, mitogenesis of factor dependent cell lines & promotion of megakaryocyte production in vivo.

Removal of LIF pushes stem cells toward differentiation, but they retain their proliferative potential or pluripotency. Therefore LIF is used in mouse embryonic stem cell culture. It is necessary to maintain the stem cells in an undifferentiated state, however genetic manipulation of embryonic stem cells

**Product Name: GMP Recombinant Mouse LIF**  
**Catalog#: PCM90056**



---

allows for LIF independent growth, notably overexpression of the gene Nanog. LIF is not required for culture of human embryonic stem cells.

**Note**

For research use only .