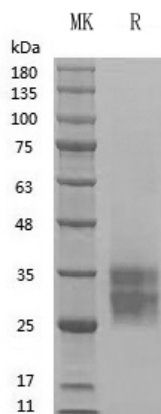


## Summary

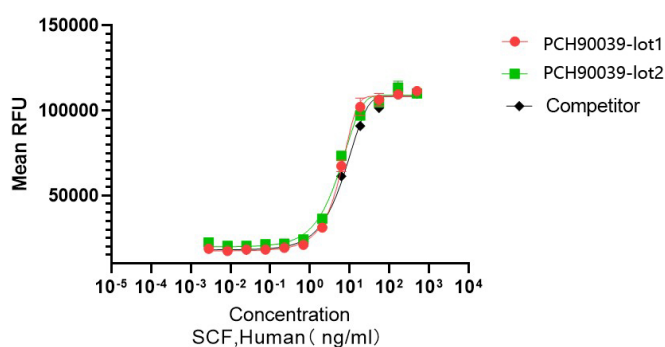
<b>Name</b>	SCF
<b>Purity</b>	Greater than 95% as determined by reducing SDS-PAGE
<b>Endotoxin level</b>	≤10 EU/mg
<b>Construction</b>	Recombinant Human SCF is produced by our Mammalian cell expression system and the target gene encoding Glu 26-Ala 190 is expressed.
<b>Accession #</b>	P21583
<b>Tag</b>	Tag free
<b>Host</b>	Mammalian cell
<b>Species</b>	Human
<b>Predicted MW</b>	18.5 kDa
<b>Form</b>	Lyophilized
<b>Buffer</b>	PBS,5% mannitol and 0.01% Tween 80, pH7.4
<b>Shipping</b>	The product is shipped at ambient temperature. Upon receipt, store it immediately at the temperature listed below.
<b>Stability&amp;Storage</b>	Store at ≤-70°C, stable for 6 months after receipt. Store at ≤-70°C, stable for 3 months under sterile conditions after opening. Please minimize freeze-thaw cycles.
<b>Reconstitution</b>	Always centrifuge tubes before opening. Do not mix by vortex or pipetting. It is not recommended to reconstitute to a concentration less than 100µg/ml. Dissolve the lyophilized protein in distilled water. Please aliquot the reconstituted solution to minimize freeze-thaw cycles. Always centrifuge tubes before opening. Do not mix by vortex or pipetting. It is not recommended to reconstitute to a concentration less than 100µg/ml. Dissolve the lyophilized protein in distilled water. Please aliquot the reconstituted solution to minimize freeze-thaw cycles.

## SDS-PAGE image

**Product Name: GMP Recombinant Human SCF**  
**Catalog#: PCH90039**



## Bioactivity image



The ED50 for this effect is 5-8 ng/mL

## Background

### Alternative Names

Kit Ligand; Mast Cell Growth Factor; MGF; Stem Cell Factor; SCF; c-Kit ligand; KITLG; MGF; SCF

### References

Stem Cell Factor (SCF) is a hematopoietic growth factor that exerts its activity at the early stages of hematopoiesis. SCF stimulates the proliferation of myeloid, erythroid, and lymphoid progenitors in bone marrow cultures and has been shown to act synergistically with colony stimulating factors.

## Note

For research use only .