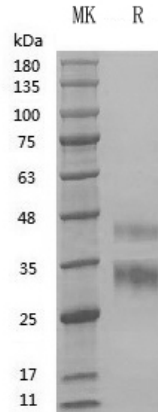


## Summary

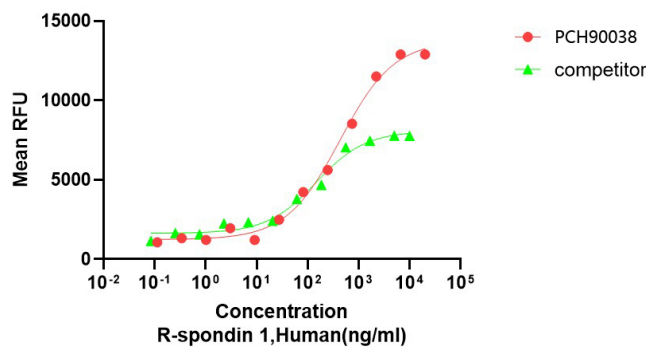
<b>Name</b>	R-Spondin1
<b>Purity</b>	Greater than 95% as determined by reducing SDS-PAGE
<b>Endotoxin level</b>	≤10 EU/mg
<b>Construction</b>	Recombinant Human R-Spondin1 is produced by our Mammalian cell expression system and the target gene encoding Ser21-Ala263 is expressed.
<b>Accession #</b>	Q2MKA7
<b>Tag</b>	Tag free
<b>Host</b>	Mammalian cell
<b>Species</b>	Human
<b>Predicted MW</b>	26.7 kDa
<b>Form</b>	Lyophilized
<b>Buffer</b>	PBS,5% mannitol and 0.01% Tween 80, pH7.4
<b>Shipping</b>	The product is shipped at ambient temperature. Upon receipt, store it immediately at the temperature listed below.
<b>Stability&amp;Storage</b>	Store at ≤-70°C, stable for 6 months after receipt. Store at ≤-70°C, stable for 3 months under sterile conditions after opening. Please minimize freeze-thaw cycles.
<b>Reconstitution</b>	Always centrifuge tubes before opening. Do not mix by vortex or pipetting. It is not recommended to reconstitute to a concentration less than 100µg/ml. Dissolve the lyophilized protein in distilled water. Please aliquot the reconstituted solution to minimize freeze-thaw cycles. Always centrifuge tubes before opening. Do not mix by vortex or pipetting. It is not recommended to reconstitute to a concentration less than 100µg/ml. Dissolve the lyophilized protein in distilled water. Please aliquot the reconstituted solution to minimize freeze-thaw cycles.

## SDS-PAGE image

Product Name: GMP Recombinant Human R-Spondin1  
Catalog#: PCH90038



## Bioactivity image



The ED50 for this effect is 1.0-3.0 µg/ml.

## Background

### Alternative Names

RSPO1; R-spondin1; RP11-566C13.1; CRISTIN3; FLJ40906; RSPO Rspo1; R-spondin; Rspodin; RP23-325M14.2; Roof plate-specific spondin-1

### References

RSPO1 is a secreted protein, containing 2 FU (furin-like) repeats and 1 TSP type-1 domain and belonging to the R-spondin family. RSPO1 is required for the early development of gonads, regardless of sex. It has been found in mice only eleven days after fertilization. To induce cell proliferation, it acts synergistically with WNT4. They help stabilize  $\beta$  catenin, which activates downstream targets. RSPO1 is necessary in female sex development. It augments the WNT/ $\beta$  catenin pathway to oppose male sex development. In critical gonadal stages, between six and nine weeks after fertilization, the ovaries upregulate it while the testes downregulate it. RSPO1 can potentially aid in the treatment of mucositis, which is characterized by inflammation of

**Product Name: GMP Recombinant Human R-Spondin1**  
**Catalog#: PCH90038**



---

the oral cavity. This unfortunate condition often accompanies chemotherapy and radiation in cancer patients with head and neck tumors.

**Note**

For research use only .