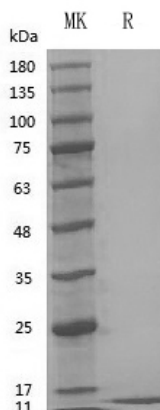


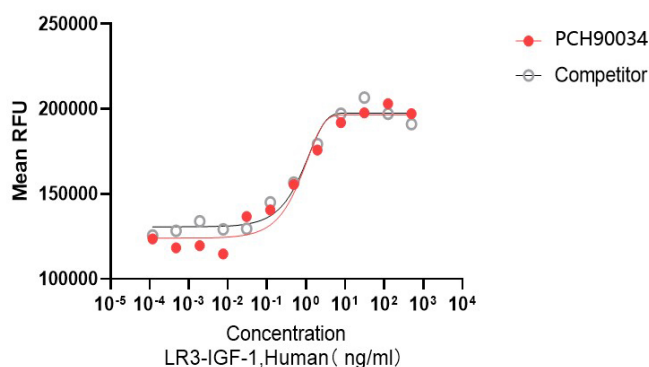
Summary

Name	LR3 IGF1
Purity	Greater than 95% as determined by reducing SDS-PAGE
Endotoxin level	≤10 EU/mg
Construction	Recombinant Human LR3 IGF1 is produced by our Mammalian cell expression system and the target gene encoding MFPAMPLSSLFVN+Gly49-Ala118(E51R) is expressed.
Accession #	P05019
Tag	Tag free
Host	Mammalian cell
Species	Human
Predicted MW	9 kDa
Form	Lyophilized
Buffer	PBS,5% mannitol and 0.01% Tween 80, pH7.4
Shipping	The product is shipped at ambient temperature. Upon receipt, store it immediately at the temperature listed below.
Stability&Storage	Store at ≤-70°C, stable for 6 months after receipt. Store at ≤-70°C, stable for 3 months under sterile conditions after opening. Please minimize freeze-thaw cycles.
Reconstitution	Always centrifuge tubes before opening. Do not mix by vortex or pipetting. It is not recommended to reconstitute to a concentration less than 100µg/ml. Dissolve the lyophilized protein in distilled water. Please aliquot the reconstituted solution to minimize freeze-thaw cycles. Always centrifuge tubes before opening. Do not mix by vortex or pipetting. It is not recommended to reconstitute to a concentration less than 100µg/ml. Dissolve the lyophilized protein in distilled water. Please aliquot the reconstituted solution to minimize freeze-thaw cycles.

SDS-PAGE image



Bioactivity image



The ED50 for this effect is ≤ 1.5 ng/mL

Background

Alternative Names

Insulin-Like Growth Factor I; IGF-I; Mechano Growth Factor; MGF; Somatomedin-C; IGF1; IBP1

References

Insulin-like growth factor I (IGF1) belongs to the family of insulin-like growth factors that are structurally homologous to proinsulin. Mature IGFs are generated by proteolytic processing of inactive precursor protein containing N-terminal and C-terminal propeptide regions. Mature human IGF-I consisting of 70 amino acids with 94% identity with mouse IGF1 and exhibits cross-species activity. IGF1 binds IGF-1R, IGF-2R, and the insulin receptor and plays a key role in cell cycle progression, cell proliferation and tumor progression. IGF1 expression is regulated by growth hormone.

Product Name: GMP Recombinant Human LR3 IGF1
Catalog#: PCH90034



Note

For research use only .