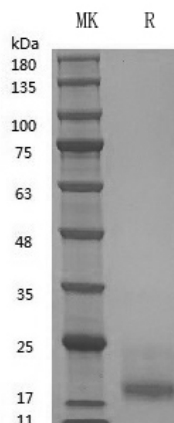


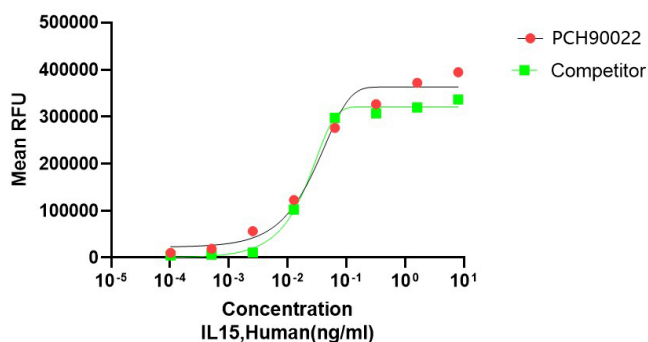
Summary

Name	IL-15
Purity	Greater than 95% as determined by reducing SDS-PAGE
Endotoxin level	≤10 EU/mg
Construction	Recombinant Human IL-15 is produced by our Mammalian cell expression system and the target gene encoding Asn49-Ser162 is expressed.
Accession #	P40933
Tag	Tag free
Host	Mammalian cell
Species	Human
Predicted MW	12.7 kDa
Form	Lyophilized
Buffer	PBS,5% mannitol and 0.01% Tween 80, pH7.4
Shipping	The product is shipped at ambient temperature. Upon receipt, store it immediately at the temperature listed below.
Stability&Storage	Store at ≤-70°C, stable for 6 months after receipt. Store at ≤-70°C, stable for 3 months under sterile conditions after opening. Please minimize freeze-thaw cycles.
Reconstitution	Always centrifuge tubes before opening. Do not mix by vortex or pipetting. It is not recommended to reconstitute to a concentration less than 100µg/ml. Dissolve the lyophilized protein in distilled water. Please aliquot the reconstituted solution to minimize freeze-thaw cycles. Always centrifuge tubes before opening. Do not mix by vortex or pipetting. It is not recommended to reconstitute to a concentration less than 100µg/ml. Dissolve the lyophilized protein in distilled water. Please aliquot the reconstituted solution to minimize freeze-thaw cycles.

SDS-PAGE image



Bioactivity image



The ED50 for this effect is ≤ 0.5 ng/ml

Background

Alternative Names

Interleukin-15; IL-15; IL15

References

Human Interleukin 15 (IL-15) is a cytokine that regulates T cell and natural killer cell activation and proliferation. IL-15 binds to the alpha subunit of the IL15 receptor (IL-15RA) with high affinity. IL-15 also binds to the beta and gamma chains of the IL-2 receptor, but not the alpha subunit of the IL2 receptor. IL-15 is structurally and functionally related to IL-2. Both cytokines share some subunits of receptors, allowing them to compete for and negatively regulate each others activity. The number of CD8+ memory T cells is controlled by a balance between IL-15 and IL-2. Despite their many overlapping functional properties, IL-2 and IL-15 are, in fact, quite distinct players in the immune system. IL-15 is constitutively expressed by a wide variety of cell types and tissues, including monocytes, macrophages and DCs.

Product Name: GMP Recombinant Human IL-15
Catalog#: PCH90022



Mature Human IL-15 shares 70% amino acid sequence identity with Mouse and Rat IL-15.

Note

For research use only .