

Product Name: ZP1 Rabbit Polyclonal Antibody
Catalog #: APRab20306

Summary

Production Name	ZP1 Rabbit Polyclonal Antibody
Description	Rabbit Polyclonal Antibody
Host	Rabbit
Application	WB,ELISA
Reactivity	Human,Rat,Mouse

Performance

Conjugation	Unconjugated
Modification	Unmodified
Isotype	IgG
Clonality	Polyclonal
Form	Liquid
Storage	Store at 4°C short term. Aliquot and store at -20°C long term. Avoid freeze/thaw cycles.
Buffer	Liquid in PBS containing 50% glycerol, 0.5% BSA and 0.02% New type preservative N.
Purification	Affinity purification

Immunogen

Gene Name	ZP1
Alternative Names	ZP1; Zona pellucida sperm-binding protein 1; Zona pellucida glycoprotein 1; Zp-1
Gene ID	22917.0
SwissProt ID	P60852.The antiserum was produced against synthesized peptide derived from human ZP1. AA range:221-270

Application

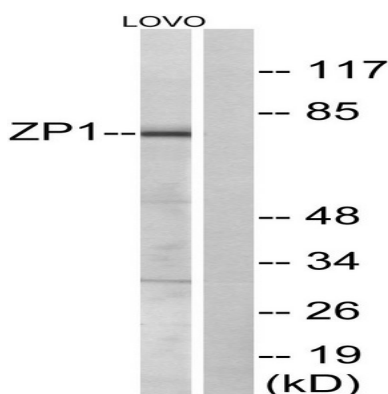
Dilution Ratio	WB 1:500 - 1:2000. ELISA: 1:10000..
Molecular Weight	70kD

Background

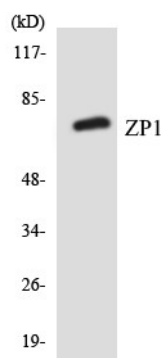
The zona pellucida is an extracellular matrix that surrounds the oocyte and early embryo. It is composed primarily of three or four glycoproteins with various functions during fertilization and preimplantation development. The protein encoded by this gene ensures the structural integrity of the zona pellucida. Mutations in this gene are a cause of oocyte maturation defect and infertility. [provided by RefSeq, May 2014],domain:The ZP domain is involved in the polymerization of the ZP proteins to form the zona pellucida.,function:The mammalian zona pellucida, which mediates species-specific sperm binding, induction of the acrosome reaction and prevents post-fertilization polyspermy, is composed of three to four glycoproteins, ZP1, ZP2, ZP3, and ZP4. ZP1 ensures the structural integrity of the zona pellucida.,PTM:O-glycosylated.,PTM:Proteolytically cleaved before the transmembrane segment to yield the secreted ectodomain incorporated in the zona pellucida.,similarity:Belongs to the ZP domain family. ZPB subfamily.,similarity:Contains 1 P-type (trefoil) domain.,similarity:Contains 1 ZP domain.,subunit:Polymers of ZP2 and ZP3 organized into long filaments cross-linked by ZP1 homodimers.,tissue specificity:Oocytes.,

Research Area

Image Data

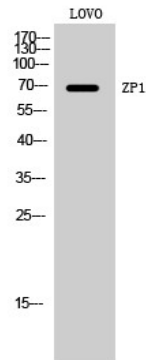


Western blot analysis of lysates from LOVO cells, using ZP1 Antibody. The lane on the right is blocked with the synthesized peptide.



Western blot analysis of the lysates from HeLa cells using ZP1 antibody.

Product Name: ZP1 Rabbit Polyclonal Antibody
Catalog #: APRab20306



Western Blot analysis of LOVO cells using ZP1 Polyclonal Antibody. Secondary antibody was diluted at 1:20000

Note

For research use only.