

---

## Summary

<b>Production Name</b>	ZnT-9 Rabbit Polyclonal Antibody
<b>Description</b>	Rabbit Polyclonal Antibody
<b>Host</b>	Rabbit
<b>Application</b>	WB,ELISA
<b>Reactivity</b>	Human,Mouse,Rat

## Performance

<b>Conjugation</b>	Unconjugated
<b>Modification</b>	Unmodified
<b>Isotype</b>	IgG
<b>Clonality</b>	Polyclonal
<b>Form</b>	Liquid
<b>Storage</b>	Store at 4°C short term. Aliquot and store at -20°C long term. Avoid freeze/thaw cycles.
<b>Buffer</b>	Liquid in PBS containing 50% glycerol, 0.5% BSA and 0.02% New type preservative N.
<b>Purification</b>	Affinity purification

## Immunogen

<b>Gene Name</b>	SLC30A9
<b>Alternative Names</b>	SLC30A9; C4orf1; HUEL; Zinc transporter 9; ZnT-9; Human embryonic lung protein; HuEL; Solute carrier family 30 member 9
<b>Gene ID</b>	10463.0
<b>SwissProt ID</b>	Q6PML9.The antiserum was produced against synthesized peptide derived from human SLC30A9. AA range:181-230

## Application

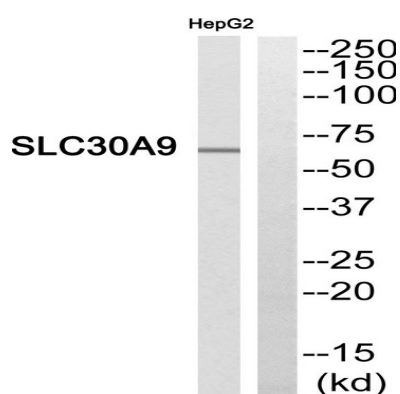
<b>Dilution Ratio</b>	WB 1:500 - 1:2000. ELISA: 1:20000. Not yet tested in other applications.
<b>Molecular Weight</b>	63kD

## Background

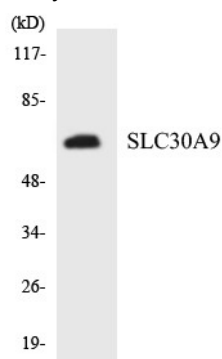
function: Plays a role in the p160 coactivator signaling pathway that mediates transcriptional activation by nuclear receptors (By similarity). Plays a role in transcriptional activation of Wnt-responsive genes.,similarity: Belongs to the cation diffusion facilitator (CDF) transporter (TC 2.A.4) family. SLC30A subfamily.,subunit: Interacts with GRIP1, ESR1 and AR.,tissue specificity: Ubiquitously expressed in fetal and adult tissues and cancer cell lines.,function: Plays a role in the p160 coactivator signaling pathway that mediates transcriptional activation by nuclear receptors (By similarity). Plays a role in transcriptional activation of Wnt-responsive genes.,similarity: Belongs to the cation diffusion facilitator (CDF) transporter (TC 2.A.4) family. SLC30A subfamily.,subunit: Interacts with GRIP1, ESR1 and AR.,tissue specificity: Ubiquitously expressed in fetal and adult tissues and cancer cell lines.,

## Research Area

## Image Data

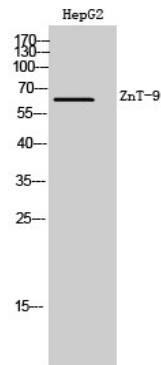


Western blot analysis of SLC30A9 Antibody. The lane on the right is blocked with the SLC30A9 peptide.



Western blot analysis of the lysates from K562 cells using SLC30A9 antibody.

**Product Name: ZnT-9 Rabbit Polyclonal Antibody**  
**Catalog #: APRab20302**



Western Blot analysis of HepG2 cells using ZnT-9 Polyclonal Antibody. Secondary antibody was diluted at 1:20000

**Note**

For research use only.