
Summary

Production Name	ZnT-8 Rabbit Polyclonal Antibody
Description	Rabbit Polyclonal Antibody
Host	Rabbit
Application	WB,ELISA
Reactivity	Human,Rat,Mouse

Performance

Conjugation	Unconjugated
Modification	Unmodified
Isotype	IgG
Clonality	Polyclonal
Form	Liquid
Storage	Store at 4°C short term. Aliquot and store at -20°C long term. Avoid freeze/thaw cycles.
Buffer	Liquid in PBS containing 50% glycerol, 0.5% BSA and 0.02% New type preservative N.
Purification	Affinity purification

Immunogen

Gene Name	SLC30A8
Alternative Names	SLC30A8; ZNT8; Zinc transporter 8; ZnT-8; Solute carrier family 30 member 8
Gene ID	169026.0
SwissProt ID	Q8IWU4.The antiserum was produced against synthesized peptide derived from human SLC30A8. AA range:171-220

Application

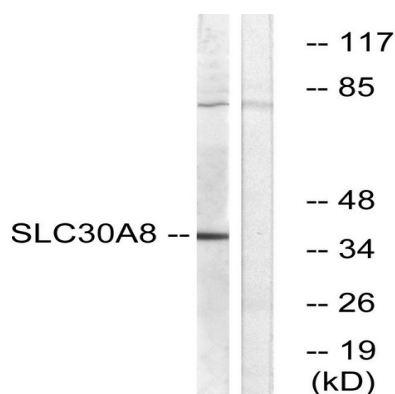
Dilution Ratio	WB 1:500 - 1:2000. ELISA: 1:10000. Not yet tested in other applications.
Molecular Weight	41kD

Background

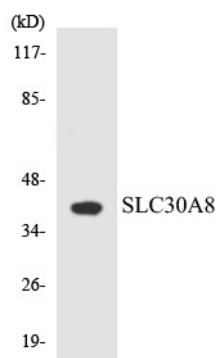
The protein encoded by this gene is a zinc efflux transporter involved in the accumulation of zinc in intracellular vesicles. This gene is expressed at a high level only in the pancreas, particularly in islets of Langerhans. The encoded protein colocalizes with insulin in the secretory pathway granules of the insulin-secreting INS-1 cells. Allelic variants of this gene exist that confer susceptibility to diabetes mellitus, noninsulin-dependent (NIDDM). Several transcript variants encoding different isoforms have been found for this gene.[provided by RefSeq, Mar 2010],domain:Contains a histidine-rich region, HXXXXXHNH-motif, which is a ligand for zinc.,function:Facilitates the accumulation of zinc from the cytoplasm into intracellular vesicles, being a zinc-efflux transporter. May be a major component for providing zinc to insulin maturation and/or storage processes in insulin-secreting pancreatic beta-cells.,polymorphism:Variant Trp-325 is a risk factor that confers susceptibility to diabetes mellitus, noninsulin-dependent (NIDDM) [MIM:125853].,similarity:Belongs to the cation diffusion facilitator (CDF) transporter (TC 2.A.4) family. SLC30A subfamily.,subcellular location:Strictly associated with the insulin granule secretory.,tissue specificity:Strictly restricted to the pancreas islets cells. Found in insulin-producing beta cells and colocalized with insulin.,

Research Area

Image Data



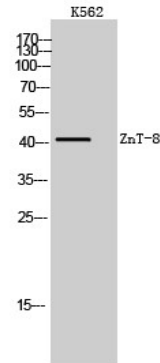
Western blot analysis of lysates from K562 cells, using SLC30A8 Antibody. The lane on the right is blocked with the synthesized peptide.



Product Name: ZnT-8 Rabbit Polyclonal Antibody
Catalog #: APRab20301



Western blot analysis of the lysates from HeLa cells using SLC30A8 antibody.



Western Blot analysis of K562 cells using ZnT-8 Polyclonal Antibody. Secondary antibody was diluted at 1:20000

Note

For research use only.