

Product Name: ZnT-4 Rabbit Polyclonal Antibody
Catalog #: APRab20298



Summary

Production Name	ZnT-4 Rabbit Polyclonal Antibody
Description	Rabbit Polyclonal Antibody
Host	Rabbit
Application	IHC,ELISA
Reactivity	Human,Mouse,Rat

Performance

Conjugation	Unconjugated
Modification	Unmodified
Isotype	IgG
Clonality	Polyclonal
Form	Liquid
Storage	Store at 4°C short term. Aliquot and store at -20°C long term. Avoid freeze/thaw cycles.
Buffer	Liquid in PBS containing 50% glycerol, 0.5% BSA and 0.02% New type preservative N.
Purification	Affinity purification

Immunogen

Gene Name	SLC30A4
Alternative Names	SLC30A4; ZNT4; Zinc transporter 4; ZnT-4; Solute carrier family 30 member 4
Gene ID	7782.0
SwissProt ID	O14863.The antiserum was produced against synthesized peptide derived from human SLC30A4. AA range:71-120

Application

Dilution Ratio	IHC 1:100-1:300 ELISA: 1:5000
Molecular Weight	47kD

Background

Zinc is the second most abundant trace metal in the human body. It is an essential element, serving both a structural role,

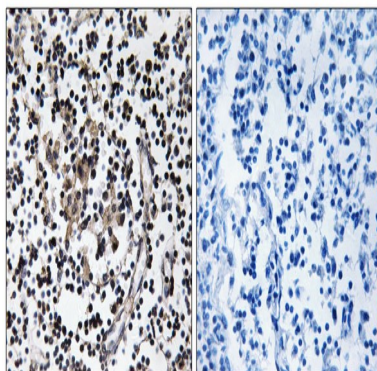
Product Name: ZnT-4 Rabbit Polyclonal Antibody
Catalog #: APRab20298



as in the formation of zinc fingers in DNA-binding proteins, and a catalytic role in metalloenzymes, such as pancreatic carboxypeptidases (e.g., MIM 114852), alkaline phosphatases (e.g., MIM 171760), various dehydrogenases, and superoxide dismutases (e.g., MIM 147450). SLC30A4, or ZNT4, belongs to the ZNT family of zinc transporters. ZNTs are involved in transporting zinc out of the cytoplasm and have similar structures, consisting of 6 transmembrane domains and a histidine-rich cytoplasmic loop (Huang and Gitschier, 1997 [PubMed 9354792]).[supplied by OMIM, Mar 2008],domain:Contains a histidine-rich region which is a ligand for zinc and an aspartate-rich region which is a potential ligand for zinc.,function:Probably involved in zinc transport out of the cytoplasm, maybe by sequestration into an intracellular compartment.,similarity:Belongs to the cation diffusion facilitator (CDF) transporter (TC 2.A.4) family. SLC30A subfamily.,

Research Area

Image Data



Immunohistochemistry analysis of paraffin-embedded human lymph node tissue, using SLC30A4 Antibody. The picture on the right is blocked with the synthesized peptide.

Note

For research use only.